



**3 WEEKENDS**

**60+ LOCATIONS**

**250+ ARTISTS**

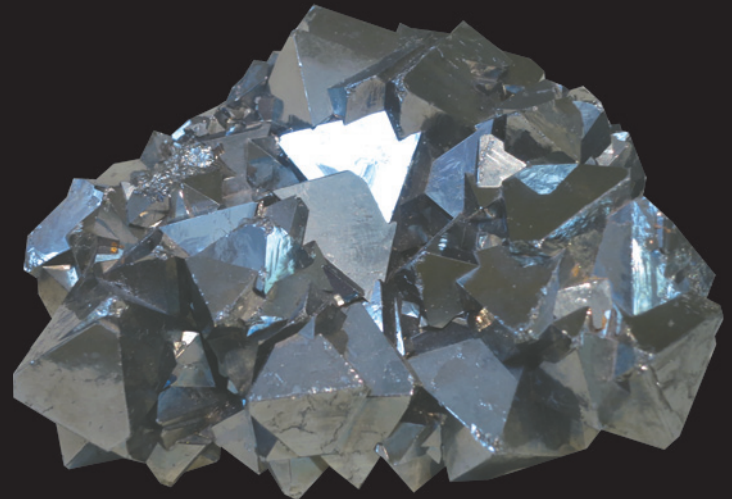
**ARTSPACE'S 15<sup>TH</sup> ANNUAL**



**THE OFFICIAL  
MAP & GUIDE**



**CITY-WIDE  
OPEN  
STUDIOS**



**EXPLORE NEW HAVEN'S HIDDEN GEMS!**



**THE CRYSTAL ANNIVERSARY**



**OCTOBER 5-21**



**2012**



Bank Foundation

**Yale**

**New Haven Register**



**CITY OF NEW HAVEN  
ECONOMIC DEVELOPMENT**  
[www.cityofnewhaven.com/EconomicDevelopment](http://www.cityofnewhaven.com/EconomicDevelopment)



**ART WORKS.**  
arts.gov



**WPKN**  
the REAL alternative  
89.5 FM



**CWOS  
HOST  
COMMITTEE**

and  
**FRIENDS OF  
ARTSPACE**



The Community Foundation  
for Greater New Haven



**Connecticut**  
still revolutionary

# Artspace and the Host Committee welcome you to City-Wide Open Studios 2012

## DEAR FRIENDS,

It is with tremendous pleasure and pride that I welcome you to the 15th edition of City-Wide Open Studios. Each October, Artspace's festival turns the New Haven area into a mecca for visual artists and our Official Map and Guide offers you, the visitor, the chance to make your pilgrimage. This year's event, our first with a thematic imprint, has invited artists to make new work to help mark our crystal anniversary. We hope you'll be on the lookout for their special efforts—from X-ray crystallography to transparent plexi-glass pop-up cubes—spanning projects inside the studios, at the hub exhibition at Artspace, throughout the Alternative Space, and even outdoors.

I look forward to this time each year to discover new members of our community and to connect them to the work that artists are already doing in making New Haven a better place. More than ever, City-Wide Open Studios is a time to forge connections with local artists, with fellow supporters of culture and cities, and to revel in the wide diversity of approaches toward art-making being taken now.

We could not have arrived at this 15th anniversary without the support of the hundreds of artists who believe in Artspace and its mission; without the immense dedication of the Artspace staff; and without the support of generous hosts, donors, and sponsors. I owe a special thanks to Artspace's Board, whose sustained enthusiasm for this program serves to enrich the lives of countless citizens of Greater New Haven.

Thank you all.

—Helen Kauder, Executive Director

## **Congresswoman Rosa DeLauro, HONORARY CHAIR LEADERSHIP CIRCLE CO-CHAIRS**

Eileen & Andy Eder  
Seth Brown & Yve Ludwig

## **HOST COMMITTEE MEMBERS**

Morel & Jeff Alexander  
Diane & Walter Ariker  
David & Susannah Bailin  
George Corsillo & Susan McCaslin  
Ellen Eisenberg & Neal Feigenson  
Ted Esselstyn & Anne Bingham  
Helen Kauder & Barry Nalebuff  
Liz & Miles Lasater  
Roland Lemar & Anika Singh  
Nick Lloyd & Megan Craig  
Barbara Pearce & Norm Fleming  
Ted Snyder  
Matthew Suttor & Dr. Semi Gork  
Len Suzio  
Barry & Diane Svigals



## DEAR FRIENDS,

Welcome to City Wide Open Studios (CWOS)! For fifteen years, Artspace has promoted the work of New Haven artists. The next three weekends will be full of creative activity and I encourage you to attend as many events as you can. I am very pleased that the City's Department of Arts, Culture, and Tourism is again able to partner with

CWOS. Our LAMP (Light Artists Making Places) festival is the perfect complement to Artspace's crystal anniversary celebration!

Congratulations to Helen Kauder and her team who have worked so hard to bring CWOS to life. Thank you for all that you do. I would also like to thank all of the participating artists; your talents and skills are commendable!

Vivian Nabeta  
Director of Arts, Culture, and Tourism  
City of New Haven



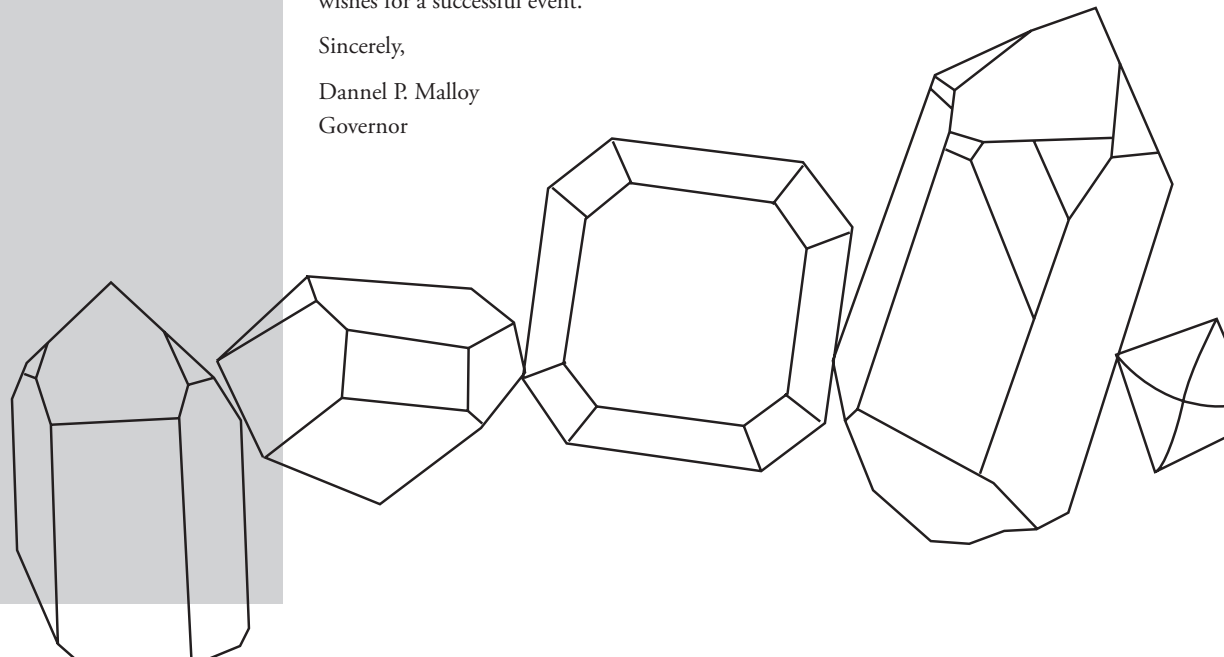
## DEAR FRIENDS,

On behalf of the State of Connecticut, it is my great pleasure to welcome all who are gathered for the 15th annual City-Wide Open Studios celebration.

Connecticut communities are an inspirational and inviting setting for artists to live and work. We have a long and rich tradition in the arts and recognize the important contribution art makes to our cities and towns.

I applaud the work of the Host Committee, Board of Directors, volunteers, sponsors, and especially the artists who have made City-Wide Open Studios possible. My best wishes for a successful event.

Sincerely,  
Dannel P. Malloy  
Governor



# GRAND OPENING NIGHT OCT. 5 FREE!

Come for the grand opening reception of CWOS, meet all the artists, and stay for a party that spans the whole neighborhood!

## Create On9

Locations throughout the Ninth Square  
6-8 PM

Create On9 celebrates New Haven's rich arts scene with LAMP (Light Artists Making Places), Artspace New Haven's City-Wide Open Studios, and a Creative Crawl through New Haven's Historic Ninth Square. Luminaries outline pathways through the district, showcasing artists' light installations along with creative activities produced by Ninth Square businesses.

## The Play House: Beyond What Was The Lot, 812 Chapel Street 5-10 PM

This modular cube, crystal clear, serves as a temporary studio by day and a four-sided, illuminated, projection space by night.

## LAMP: Glow. Reflect. Project. Light Artists Making Places Locations throughout the Ninth Square 8-11 PM

Hosted by the City of New Haven Arts, Culture, and Tourism, Project Storefronts, Artspace, Cafe 9, 9 Arts, Fractured Atlas, and Umbrella Arts.

## THE PLAY HOUSE: BEYOND WHAT WAS ARTSPACE LOT, 812 CHAPEL STREET

In association with Light Artists Making Places (LAMP).  
Conceived and Curated by Marianne Bernstein.

The Play House is a transparent, nomadic 8' X 8' aluminum cube which functions as a studio by day and a four-sided video installation by night. Designed to activate neglected spaces, an artist interacts with the public inside the cube daily. This interaction is filmed and participants are invited to return and watch themselves projected onto the cube's exterior each night.



**SATURDAYS + SUNDAYS**  
NOON - 9 PM

**WEEKEND 1**  
DARWIN NIX

**WEEKEND 2**  
KELLY ANDERSON-STALEY

**WEEKEND 3**  
MARIANNE BERNSTEIN  
WITH LIBERTY COMMUNITY  
SERVICES CLIENTS



## ANOTHER CRYSTAL LAND: A production of Artspace in collaboration with Franklin Street Works Curated by Terri C. Smith at the New Haven Register October 20 + 21

DEBRA BAXTER & MARGOT QUAN KNIGHT • BEN GODDARD • LUCY RAVEN  
ROB SMITH • ROBERT SMITHSON



**FRANKLIN  
STREET  
WORKS**

Debra Baxter and Margot Quan Knight  
Screen shot 2010-11-30 at 3:08:48 PM (Quartz), 2012, Digital print on paper

# EVENT CALENDAR

4

ARTSPACE'S 15TH ANNUAL CITY-WIDE OPEN STUDIOS

## WEEKEND ONE

OCT. 6 - 7  
PRIVATE STUDIOS  
OPEN 12 - 5 PM



**OCT. 6 + 7**

### LIMITED EDITION PASSPORT

MADE BY DEXTERITY PRESS

GET ONE WHILE THEY LAST.

Available at the Opening Reception at Artspace.  
FREE!



### BIKE TOURS

12-4 PM

THE DEVIL'S GEAR BIKE SHOP

151 ORANGE STREET

Take advantage of the beauty of New Haven and experience CWOS by bike! Riders of all levels are welcome on these tours, led by Matt Feiner of the Devil's Gear Bike Shop. Meet in Pitkin Plaza between 11:30 AM and 12 PM; tours begin promptly at 12 PM. FREE

### THE PLAY HOUSE: BEYOND WHAT WAS

12-9 PM | OPENING NIGHT: Oct. 5, 5-10 PM

The Lot, 812 Chapel Street

Darwin Nix, abstract etchings. FREE

## WEEKEND TWO

OCT. 13 - 14  
315 PECK STREET  
OPEN 12 - 5 PM



**OCT. 13 + 14**

### OPEN STUDIOS

\$5 suggested contribution

**OCT. 11** PRE-WEEKEND EVENT

### CURATOR-LED ERECTOR SQUARE PREVIEW TOURS

6-10 PM

Led by Brooke Davis Anderson, Susan Cahan, Cathleen Chaffee, or Paul Ha. Tickets are still available for this exclusive evening to benefit Artspace.

\$125 for dinner, tour, and dessert 6 PM

\$45 for tour and dessert 7:30 PM

More information on featured studios and tickets can be found at [www.artspacenh.org/events](http://www.artspacenh.org/events).

**OCT. 12** PRE-WEEKEND EVENT

### SPECIAL EVENT FOR ERECTOR SQUARE ARTISTS

Live Stream of Creative Time Summit

3-6 PM

This pre-weekend party will bring the work of prominent artists, activists, and cultural producers who tackle issues of wealth inequity through public discourse to the artists of Erector Square. Email [jp@artspacenh.org](mailto:jp@artspacenh.org) for location & more information.

[www.creativetime.org/summit](http://www.creativetime.org/summit)

### THE PLAY HOUSE: BEYOND WHAT WAS

12-9 PM

The Lot, 812 Chapel Street

Keliy Anderson-Staley, tin types. FREE

## WEEKEND THREE

OCT. 20 - 21  
NEW HAVEN REGISTER  
OPEN 12 - 5 PM



**OCT. 20 + 21**

### OPEN STUDIOS

\$5 suggested contribution

**OCTOBER 21 + 22**

### GROUP SHOW

Works by Artspace's Visual Arts Committee

### STUDIO ON WHEELS

Pop in to the delivery trucks in the New Haven Register Parking Lot. Artists re-imagine the vehicles as sites for roving installations.

Ian Applegate and Colin Burke



**OCT. 22**

### ANOTHER CRYSTAL LAND: CURATOR TOUR

3 PM

At the Register, Terri C. Smith, Director of Franklin Street Works leads a tour. Featuring artists Deborah Baxter, Lucy Raven, Robert Smithson, and others.

### THE PLAY HOUSE: BEYOND WHAT WAS

12-9 PM

The Lot, 812 Chapel Street

Marianne Bernstein, with Liberty Community Services clients. FREE

## OTHER EXHIBITIONS AT ARTSPACE ON VIEW THROUGH OCT. 21

## CRYSTAL PALACE FILM/VIDEO FEST

ARTISTS INCLUDE: Abigail Child, New York · Alexander Stewart + White/Light, Chicago · Bobby Abate, New York  
Cade Bursell, Carbondale, IL · Cara Levine, San Francisco · Eric Stewart, San Francisco · Filipe Afonso, Lisbon,  
Portugal · Jen Cohen, Oakland · Jessica Miller, San Francisco · John Stone, New York · Kathleen Quillian, Oakland  
Leigh Orpaz, Tel Aviv · Michael Lasater, South Bend, IN · Patrick Tarrant, London · Rebecca Nijdowski, San Francisco  
RKDB, Oakland · Shambhavi Kaul, India/North Carolina · Shana Moulton, Brooklyn · Suzy Poling/Pod Blotz, San  
Francisco · Thorsten Fleisch, Berlin

Selections from the Crystal Palace will be screened at Krowserk Gallery, Oakland, CA on October 13.

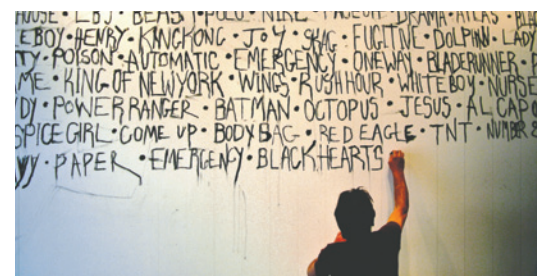


To complement the crystal anniversary, this inaugural CWOS film/video festival features a looping program of crystal-themed, crystallizing, and multi-faceted videos and films representing artists from around the world. Crystals, including snowflakes, diamonds, ice crystals, and gems, appear in abstract and narrative forms taking the cultural, scientific, and mathematical associations of crystal as a point of departure. **Organized by Liena Vayzman**

## SPECIAL SCREENING October 18, 7 pm

ECA alum Bobby Abate returns to New Haven to discuss his work with the curator after this special screening.

**ONE NIGHT ONLY!**



## BEYOND WHAT WAS

Prints by Darwin Nix

Tintypes by Keliy Staley-Anderson

On view in the Project Room at Artspace.

Made possible thanks to the support of the National Endowment for the Arts.



## JOHN/JANE PROJECT

Artspace Artist-in-Residence Giada Crispiels transforms the washrooms with papier-mâché and doodles.

## COMING UP NEXT AT ARTSPACE: OPENING NOVEMBER 9, 2012

ALYSE ROSNER:  
LARGE SCALE WORK

Harry Philbrick, Curator

Long-time Director of the Aldrich Museum and now Director of Pennsylvania Academy of Fine Art Museum, has followed the evolution of Rosner's work for more than ten years.



photo: Cory Smith

## INSTRUCTIONS NOT INCLUDED: TINKER, HACK, TWEAK

Organized by Martha Lewis

This exhibition constructs a visual discussion around the creative possibilities of readymade culture. It will serve as a forum for re-examining industrial design, our daily environment, and the objects with which we surround ourselves. INI will feature workshops, panel talks, and artists collaborating on projects in and outside the space—it will include such objects as bicycles, clothing, furniture, lighting, electronics, and demonstrations of new technologies. Featuring Cory Smith and Mary Little. Additional artists selected from the open call to be announced.

TOOLS BY **StanleyBlack&Decker**

## AROUND CWOS: OTHER EXHIBITIONS AND PROJECTS ON VIEW

**AZOTH GALLERY** 133 Elm Street (Lower Level), New Haven, CT | *Artists of Gallery RIVAA, NYC* | Oct. 13–Nov. 16, 2012 | Public reception for the artists: Saturday, Oct. 13, 2–4 PM

**CITY GALLERY** 994 State Street, New Haven, CT | Jennifer Davies, *Sensing the Thread* | Oct. 4–28, 2012 | Opening Reception: Sat. Oct. 6, 2–5pm | Artists' Talk: Sun. Oct. 28, 2pm

**GIAMPIETRO GALLERY** 315 Peck Street, New Haven, CT | Works by Elizabeth Gourlay & Susan Carr | Oct. 12–Nov. 10, 2012 | Opening Reception: Friday, Oct. 12th, 5–8pm

**THE GROVE COWORKING SPACE** 71 Orange Street, New Haven, CT | David Ottenstein, *Almost Nowhere* | Oct. 1–Nov. 9, 2012 | 5–8 PM

**INSTITUTE LIBRARY** 847 Chapel Street, New Haven, CT | *Making Room: Ten Interpretations* | Oct. 6–Nov. 3, 2012 | Artists' reception: Oct. 6, 12–2 PM

**NEW HAVEN FREE PUBLIC LIBRARY** 133 Elm Street, New Haven, CT | *Posters from an Island—4 Artists of Cuba* | Sept. 12–Oct. 12, 2012 | 3–5 PM

**REYNOLD'S FINE ART** 96 Orange Street, New Haven, CT | Robert Reynolds & Mary Black | Oct. 5–27, 2012 | Artists' Reception: Friday, Oct. 5, 5–8pm

Indicates artist with crystallizing work.

**WEEKEND KEY**

- ① PASSPORT | OCT. 6 + 7
- ② ERECTOR SQUARE | OCT. 13 + 14
- ③ ALTERNATIVE SPACE | OCT. 20 + 21

**100 PHILLIP ALEXANDER**

② ERECTOR SQUARE | OCT. 13 + 14  
FABRIC/PAPER

**101 CORINA ALVAREZ DELUGO**

② ERECTOR SQUARE | OCT. 13 + 14  
MIXED MEDIA PAINTING

I love the challenge involved in capturing the essence of an object, mood, feeling, person, or place using a circle or a sphere, with a minimalist approach. In my work I demonstrate my interaction with the world around me—from the natural environment to social consciousness, and everything in between. I am drawn to texture, color, and shape as they help me to describe my observations and experiences.  
[www.corinadotdash.com](http://www.corinadotdash.com)

**102 HIL ANDERSON**

② ERECTOR SQUARE | OCT. 13 + 14  
PHOTOGRAPHY

**103 SCOTT ANDREWS**

② ERECTOR SQUARE | OCT. 13 + 14  
PAINTING

I am fascinated by the blur. As humans, we have instant, intense reactions to images, words, thoughts, people's expressions, sounds, etc. so quickly that we often don't understand what happened until the moment has passed; my goal is to make you feel that reaction. I nearly always layer a work with only two or three raw colors that are brushed, pooled, splattered, and scraped until depth and feeling of movement are established.  
[www.ScottBryanAndrews.com](http://www.ScottBryanAndrews.com)

**4 MICHAEL ANGELIS**

① PASSPORT | OCT. 6 + 7  
39 CHURCH ST., 4TH FLOOR  
NEW HAVEN  
OIL PAINT  
[www.breckfess.com](http://www.breckfess.com)

**48 ASPASIA PATTI ANOS**

① PASSPORT | OCT. 6 + 7  
WEST COVE STUDIOS  
30 ELM ST., WEST HAVEN  
MIXED MEDIA

These prints, from the series *Branford Supply Pond* extend my ongoing concerns with domestic, interior, and familiar terrains. The Supply Pond, nearby my home, has been a place of escape and contemplation for me for many years, and I have taken hundreds of photographs of its seasonal changes, growth, and decay. My interest lies in the dynamic interplay between residue and mark, evidence and response, memory remade by memory—clarity arrived at through chance and complication.

**288 IAN APPEGATE**

③ ALTERNATIVE SPACE | OCT. 20 + 21  
MIXED/VIDEO

**165 JOHN ARABOLAS**

② ERECTOR SQUARE | OCT. 13 + 14  
DIGITAL PHOTOGRAPHY, MULTIMEDIA

**104 AMY ARLEDGE**

② ERECTOR SQUARE | OCT. 13 + 14  
ETCHING

My copper plate etchings are mainly subjects from nature. My focus is strictly on the subjects, so often I present them in solitude to emphasize their individual character and essence. I hope that my etchings are a small reminder of the elegant harmony in nature. Through printmaking, I also like to explore abstracts. Abstracts allow me to expand my range of expression and enable me to experiment with new techniques.  
[www.amyarledge.com](http://www.amyarledge.com)

**106 SOPHIE ASTON**

② ERECTOR SQUARE | OCT. 13 + 14  
PAINTING

In recent collages I have spliced painted elements into rearranged interiors culled from vintage "Better Homes and Gardens" magazines. I feel that each room plays host to an unknowable source of disquiet. Having spent a period of time introducing the painted gesture into small scale collage, I am now introducing collage principals into larger paintings. I am painting house plants and other domestic ephemera—overlying the imagery by repainting and erasing the canvas many times.  
[www.sophieaston.co.uk](http://www.sophieaston.co.uk)

**107 LANI ASUNCION**

② ERECTOR SQUARE | OCT. 13 + 14  
VIDEO

In their use of Hawaiian and Japanese folk-histories as well as the landscapes of rural Connecticut and my upbringing overseas and across the South in the United States, my videos are a transference of experience woven into a visual language of new personal histories. I explore the parallels of painting and video, trying to ask the question in each work how a video can have the same presence as a painting.  
[www.laniasuncion.com](http://www.laniasuncion.com)

**108 JUDY ATLAS**

② ERECTOR SQUARE | OCT. 13 + 14  
PAINTING

I am an abstract artist. My paintings, monotypes, and collages are interpretations of the patterns, rhythms, colors, shapes, and movements found in nature and everyday life. My work relates to places and landscapes, both real and imagined, external and internal.  
[www.judyatlas.com](http://www.judyatlas.com)

**14 ANNA HELD AUDETTE**

① PASSPORT | OCT. 6 + 7  
24 EVERIT ST., NEW HAVEN  
OIL

My paintings comment on the melancholy beauty found in relics of our recent industrial past. The relics remind us that, in our rapidly changing world, the triumphs of technology are just a moment away from obsolescence. Yet these remains of collapsed power have a strength, grace, and sadness that is both eloquent and impenetrable. Transfigured by time and light, which render the ordinary extraordinary, they form a visual requiem for the industrial age.

**63 CAT BALCO**

① PASSPORT | OCT. 7 ONLY  
114 ARDMORE ST., HAMDEN  
PAINTING

My large-scale patterned wall paintings begin as small abstract paintings of forms and rhythms. These small, gestural, colorful first paintings are derived from my loose observation of natural forms. I make these preliminary paintings quickly to create works that, to me, come close to depicting the beginning of a life or the awakening of a moment of great joy. Their simple geometric compositions connect them to ancient symbols of fertility, life, the sun, and growth.  
[www.catbalco.com](http://www.catbalco.com)

**287 ANITA BALKUN**

③ ALTERNATIVE SPACE | OCT. 20 + 21  
COLLAGE

**209 JANICE BARNISH**

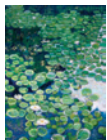
③ ALTERNATIVE SPACE | OCT. 20 + 21  
INSTALLATION

This work uses true stories and real objects as its medium. It's based on the idea that up until a few centuries ago art was bad engineering, used to solve problems, like ensuring fertility, good crops, or a place in heaven. I believe the job of the artist is still to try and solve problems science can not, like death and helping lost birds find their way back on course.  
[www.jbarnishprojects.com](http://www.jbarnishprojects.com)

- 109 **KAREN BARTONE**  
② ERECTOR SQUARE | OCT. 13 + 14  
PAINT

I am a stone-cold beauty junky. I believe beauty is an essential timeless need for humanity. My paintings suggest empathy for beauty. In this work, *Enchanted*, I paint the shimmering atmosphere and succulent textures of the woodland setting of my studio. Here, I indulge in the essence of splendor and how the ordinary becomes extraordinary. This work offers a retreat into my perception of Eden.

[www.karenbartone.com](http://www.karenbartone.com)



- 110 **HAYNE BAYLESS**  
② ERECTOR SQUARE | OCT. 13 + 14  
STONEWARE

The trick is not to fool with the material's inherent desire to be expressive. Hand-building lets me take advantage of clay's ability to capture gesture and movement, and its power to record processes. Constantin Brancusi wrote in 1927: "Each material has its own life...we must not try to make materials speak our language, we must go with them to the point where others will understand their language."

[www.idewaysstudio.com](http://www.idewaysstudio.com)



- 210 **JEFF BECKER**  
③ ALTERNATIVE SPACE | OCT. 20 + 21  
PHOTOGRAPHY

- 7 **MARY BLACK**  
① PASSPORT | OCT. 6 + 7  
REYNOLDS FINE ART  
96 ORANGE ST.  
ENCAUSTIC ON PANEL

- 111 **MEG BLOOM**  
② ERECTOR SQUARE | OCT. 13 + 14  
SCULPTURE

Transformation is often the inspiration for my work. Finding beauty in the imperfect or impermanent and engaging with the process of transience form the basis of both my two-dimensional and three-dimensional work. In my work one can look through layers, see layers peeling away, and not be sure if something is growing/regenerating or deteriorating. I am drawn to the ambiguity of forms. I am interested in chaos that comes out of even the most predictable.

[www.city-gallery.org](http://www.city-gallery.org)

- 112 **PAUL BLOOM**  
② ERECTOR SQUARE | OCT. 13 + 14  
PHOTOGRAPHY



- 212 **ETHAN BOISVERT**  
③ ALTERNATIVE SPACE | OCT. 20 + 21  
PAINTING

I am constantly investigating size and scale, shrinking or expanding the planes on which I paint. Using found and created wooden objects instead of canvas I am returning to a past interest in the semi-flat, semi-three-dimensional art work, the place where painting and sculpture meet. Other new works and proposals include small paintings and wall-to-wall-floor-to-ceiling installations.

[www.ethanboisvert.com](http://www.ethanboisvert.com)

- 113 **JOAN BOMBALICKI**  
② ERECTOR SQUARE | OCT. 13 + 14  
OIL

- 8 **VITO BONANNO**  
① PASSPORT | OCT. 6 + 7  
756 CHAPEL ST., 3RD FLOOR, NEW HAVEN  
MIXED VISUAL  
[www.vitobonanno.com](http://www.vitobonanno.com)



- 203 **BETTY BOYD**  
③ ALTERNATIVE SPACE | OCT. 20 + 21  
SCULPTURE

- 200 **LAURA BOYER**  
③ ALTERNATIVE SPACE | OCT. 20 + 21  
PHOTOGRAPHY

- 114 **RITA BRIEGER**  
② ERECTOR SQUARE | OCT. 13 + 14  
ACRYLIC ON PAPER  
"Never let reality get in the way of imagination," sums up my approach to art. My work flows with intention, playfulness, and unexplained guidance.



- 47 **JAY BRIGHT**  
① PASSPORT | OCT. 6 + 7  
WEST COVE STUDIOS  
30 ELM ST., WEST HAVEN  
WATERCOLOR

- 115 **ADRIEN BROOM**  
② ERECTOR SQUARE | OCT. 13 + 14  
PHOTOGRAPHY

- 19 **ALEXIS BROWN**  
① PASSPORT | OCT. 6 + 7  
THE ELI WHITNEY BARN  
920 WHITNEY AVE., HAMDEN

INK

My subjects are: Lithography, Etching, Silk Screen, and Ink sketchbooks. Subject matter is primarily animals.



- 214 **JODI BROWN**  
③ ALTERNATIVE SPACE | OCT. 20 + 21  
OIL

Oil paint has a way of crossing over into sculpture; its thick, oily consistency makes it capable of being very thin, light painting or thick trudges almost like molding through clay. I am mainly interested in figurative art; I enjoy the challenge and the amount of dedication it takes to be able to render the figure. The figure is great to work with as a subject because it has a way of telling an immediate story to the viewer.



- 25 **FRANK BRUCKMANN**  
① PASSPORT | OCT. 6 + 7  
FRIO 372, WEST ROCK AVE., WESTVILLE  
OIL  
[www.fbruckmann.com](http://www.fbruckmann.com)

- 116 **COLIN BURKE**  
② ERECTOR SQUARE | OCT. 13 + 14  
PHOTOGRAPHY  
I work with analog, antique photographic processes to explore the themes of liminal space, time, and proximity.  
[www.colinburkestudio.com](http://www.colinburkestudio.com)



- 117 **CLAUDINE BURNS SMITH**  
② ERECTOR SQUARE | OCT. 13 + 14  
CLAY

- 118 **HANNA CALCAGNI**  
② ERECTOR SQUARE | OCT. 13 + 14  
ACRYLIC/MIXED MEDIA ON PAPER

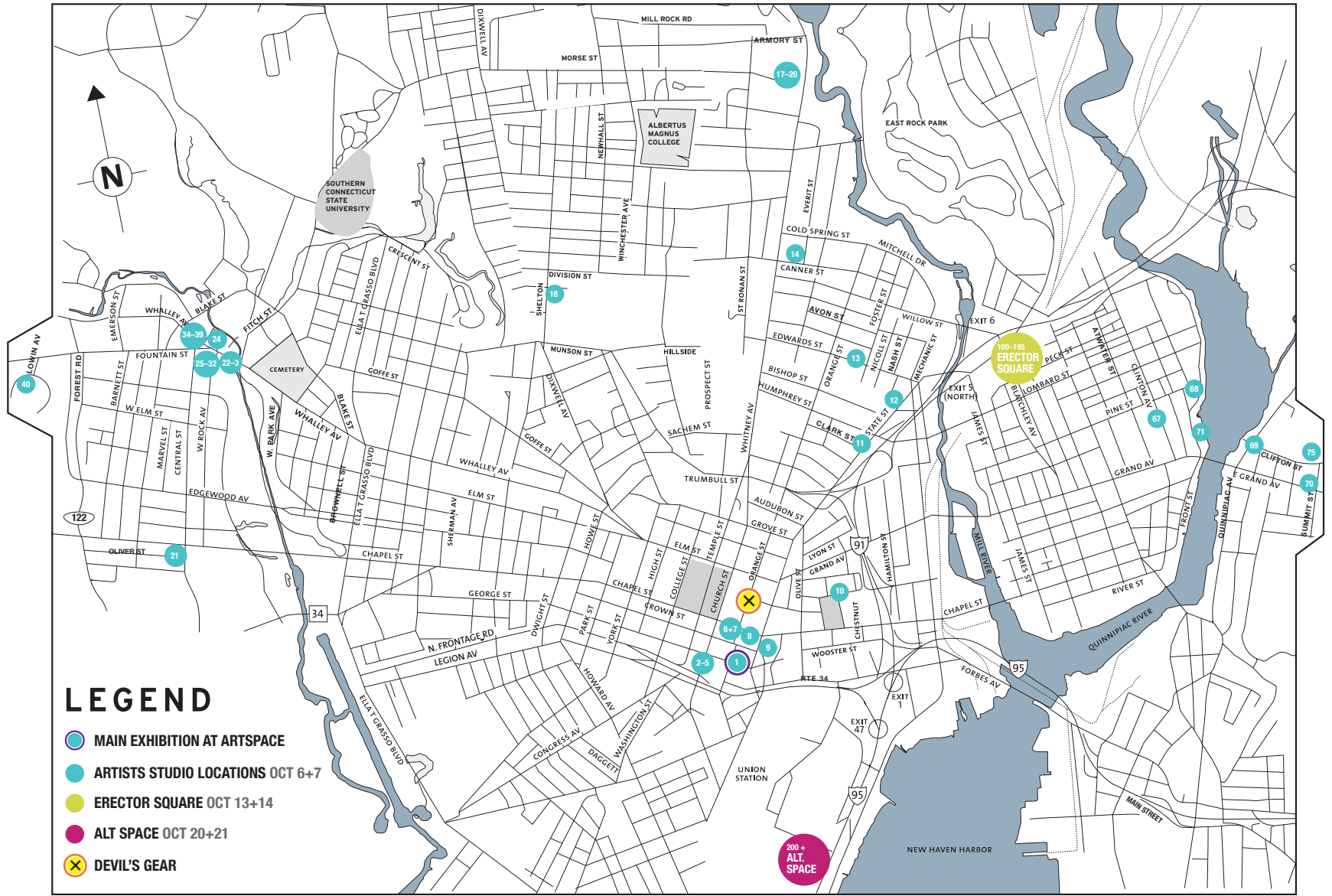
- 15 **LESLIE CARMIN**  
① PASSPORT | OCT. 6 + 7  
17 ANDERSON ST., NEW HAVEN  
PENCIL

- 55 **JEFF CARTER**  
① PASSPORT | OCT. 6 + 7  
14 B GILBERT ST., WEST HAVEN  
WOOD  
[www.westmountgroup.com](http://www.westmountgroup.com)

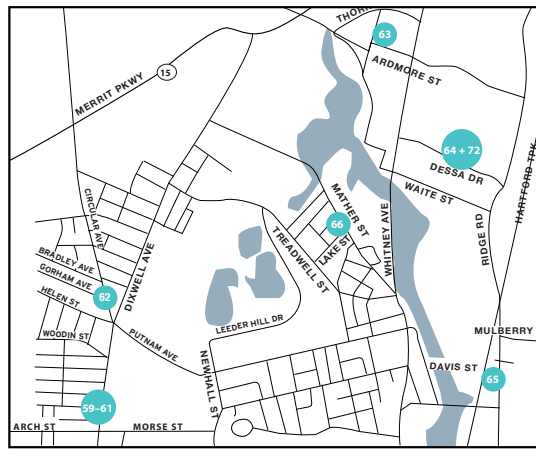
- 61 **JEREMY CHANDLER**  
① PASSPORT | OCT. 6 + 7  
HIGHWOOD SQUARE  
943 DIXWELL AVE., HAMDEN  
PHOTOGRAPHY

- 215 **HILLARY CHARNAS**  
③ ALTERNATIVE SPACE | OCT. 20 + 21  
MULTI-MEDIA  
[www.hillarycharnas.com](http://www.hillarycharnas.com)

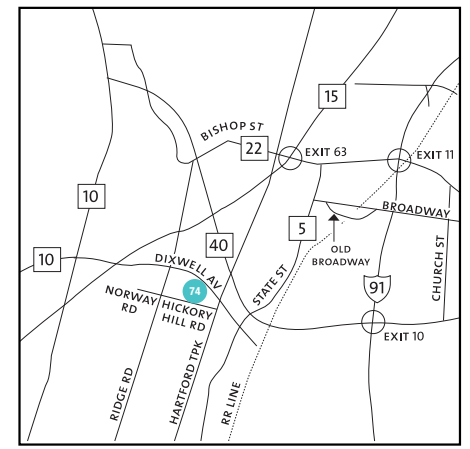




WEST HAVEN



HAMDEN



NORTH HAVEN



## ARTSPACE OFFERS MANY WAYS TO PLAN YOUR ROUTE TO THE OPEN STUDIOS.

Start at the Main Exhibition at 50 Orange Street, where each participating artist displays one work. The exhibition is organized by neighborhood, so once a work captures your interest, see if other artists nearby do so as well. Or, check out our new online map which allows you to preview the artists' work and location in a single click of the mouse: [www.zeemaps.com/pub?group=406158](http://www.zeemaps.com/pub?group=406158). Once again, we've teamed with New Haven's very own Dexterity Press to offer you a limited-edition letterpress passport to bring to each studio. Collect enough stamps, marks, drawings, or other contributions from artists you visit during the first weekend of the festival and you'll be eligible to win a \$250 gift certificate to the Artspace Flatfile and a signed copy of *Crystallography*, by poet ChristianBok.



This symbol means that Artspace has confirmed wheelchair access at a studio complex. If you have questions about access at a private studio, please call Artspace at 203-772-2709 and we will contact the artist for you.

## OCTOBER 6 + 7 ARTIST STUDIO LOCATIONS

### DOWNTOWN

- 1 **GIADA CRISPIELS**  
50 ORANGE ST.

### 39 CHURCH ST.

- 4 **MICHAEL ANGELIS**  
3 **SILAS FINCH**  
5 **STEPHEN GROSSMAN**  
2 **GERALD SALADYGA**

- 6 **DAVID OTTENSTEIN**  
THE GROVE, 71 ORANGE ST.  
7 **REYNOLDS FINE ART GALLERY**  
96 ORANGE ST.  
8 **VITO BONANO STUDIO**  
756 CHAPEL ST.

### WOOSTER SQUARE

- 9 **MEGAN CRAIG**  
87 UNION ST., UNIT 3. SUNDAY ONLY  
10 **JONATHAN WEINBERG**  
251 GREENE ST.

### EAST ROCK

- 11 **MAURA GALANTE**  
860 STATE ST.  
12 **JENNIFER DAVIES**  
994 STATE ST.  
14 **ANNA HELD AUDETTE**  
24 EVERIT ST., REAR  
13 **JULIA COASH**  
79 FOSTER ST.  
15 **LESLIE CARMIN**  
17 ANDERSON ST.

### NEWHALLVILLE

- 16 **ANDREW FRANCIS**  
91 SHELTON AVE. SUNDAY ONLY

### MILL RIVER

ELI WHITNEY BARN  
920 WHITNEY AVE., HAMDEN

- 17 **KIARA MATOS**  
18 **SUSAN CLINARD**  
19 **ALEXIS BROWN**  
20 **SARA THOMAS**

### WHALLEY AVE./WESTVILLE

- 21 **ANOKA FARUQUE**  
213 CENTRAL AVE. SUNDAY ONLY

### 827 WHALLEY AVE.

- 22 **HEIDI COUTU**  
23 **TRACIE CHENG**

- 24 **GAR WATERMAN**  
425 WEST ROCK AVE.

### 838 WHALLEY AVE.

- 25 **FRANK BRUCKMANN**  
SUITE B  
26 **GEORGE CORSILLO**  
UNIT 12  
27 **SUSAN MCCASLIN**  
UNIT 12  
28 **MARJORIE WOLFE**  
29 **MISTINA & LUKE HANSCOM**

- 30 **JOANNE WILCOX**  
UNIT 5  
31 **JORDAN NODELMAN**  
UNIT 5  
32 **MATTY DAGRADI**  
UNIT 5

### 904 WHALLEY AVE. 4

- 34 **JOHN KEEFER**  
35 **MICHAEL GALVIN**

### 910 WHALLEY AVE. 1+1B

- 36 **ALAN GREENIER**  
37 **SIGRUN MÜLLER**  
ENTER AT 55 FOUNTAIN ST., 3  
38 **ANN OBERKIRCH**  
39 **CHRIS ENGSTROM**

- 40 **JACOB PONGRATZ**  
265 JUDWIN AVE.

### WEST HAVEN

#### WEST COVE PRINTMAKING WORKSHOP & GALLERY

- 33 **ROXANNE FABER SAVAGE**  
41 **ANITA SOOS**  
42 **KATHLEEN THOMA**  
43 **JONATHAN WATERS**  
44 **PAUL DAUKAS**  
45 **SUSAN D'ANGELO**  
46 **CLAUDIA CRON**  
47 **JAY BRIGHT**  
48 **ASPASIA PATTI ANOS**  
49 **EILEEN EDER**  
50 **LAURA GARDNER**  
51 **KEVIN HARTY**  
52 **EVIE LINDEMANN**  
53 **BARBARA MARKS**  
54 **DOUGLAS NYGREN**  
77 **SUSAN NICHOLS**  
192 **THOMAS STAVOVY**

#### 14 GILBERT STREET STUDIOS

- 55 **JEFF CARTER**  
56 **WILLIE HOFFMAN**  
57 **RYAN CYR**  
58 **RACHAEL VATERS-CARR**  
76 **DAVID GROSZ**

### HAMDEN

#### HIGHWOOD SQUARE 943 DIXWELL AVE.

- 59 **KRISTINA ZALLINGER**  
60 **THUAN VU**  
61 **JEREMY CHANDLER**

- 62 **PAIER COLLEGE OF ART:  
STUDENT + FACULTY GROUP**  
20 GORHAM AVE.

- 63 **CAT BALCO**  
114 ARDMORE ST. SUNDAY ONLY

### 111 DESSA DR.

- 64 **KEVIN VAN AELST**  
72 **KIMBERLY VAN AELST**

- 65 **JOSEPH GUDDEMI**  
68 MULBERRY HILL ST.

- 66 **CHRISTOPHER MIR**  
BY APPOINTMENT ONLY (203) 215-9770

### FAIR HAVEN

- 67 **CONRAD DUENKEL**  
103 CLINTON AVE.  
68 **MORGAN SCHWARTZ**  
276 FRONT ST.  
69 **BRIAN GILL WENDLER**  
26A CLIFTON ST.  
70 **WILLIAM MEDDICK**  
337 SUMMIT ST.  
71 **CLYMENZA HAWKINS**  
185 FRONT ST.  
75 **MARTY LILLIS**  
261 CLIFTON ST.

### NORTH HAVEN

- 74 **LUCIENNE COIFMAN**  
11 HICKORY HILL RD., NORTH HAVEN  
SUNDAY ONLY



### OCTOBER 13+14

100-199

### ERECTOR SQUARE

Only first floor is wheelchair accessible.



### OCTOBER 20+21

200+

### ALTERNATIVE SPACE

10

23

## TRACIE CHENG

① PASSPORT | OCT. 6 + 7  
WESTVILLE VILLAGE, NEW HAVEN  
WATERCOLOR  
[www.cargocollective.com/traciecheng](http://www.cargocollective.com/traciecheng)

## 18 SUSAN CLINARD

① PASSPORT | OCT. 6 + 7  
ELI WHITNEY BARN  
920 WHITNEY AVE., HAMDEN  
CLAY  
[www.clinard.org](http://www.clinard.org)



## 13 JULIA COASH

① PASSPORT | OCT. 6 + 7  
79 FOSTER ST., EAST ROCK  
PAINTING



## 74 LUCIENNE COIFMAN

① PASSPORT | OCT. 7 ONLY  
11 HICKORY HILL RD., NORTH HAVEN  
FIBER

## 26 GEORGE CORSILLO

① PASSPORT | OCT. 6 + 7  
838 WHALLEY AVE, #12, NEW HAVEN  
GRAPHIC DESIGN

## 22 HEIDI COUTU

① PASSPORT | OCT. 6 + 7  
827 WHALLEY AVE, LYRIC HALL BUILDING  
OIL ON CANVAS  
[www.heidicoutu.com](http://www.heidicoutu.com)



## 9 MEGAN CRAIG

① PASSPORT | OCT. 7 ONLY  
87 UNION ST., #3, NEW HAVEN  
PAINTING  
[www.megancraig.com](http://www.megancraig.com)



1

## GIADA CRISPIELS

① PASSPORT | OCT. 6 + 7  
50 ORANGE ST., (ARTSPACE, GALLERY 7)  
③ ALTERNATIVE SPACE | OCT. 20 + 21  
INSTALLATION  
[www.giadacrispiels.com](http://www.giadacrispiels.com)

## 184 PATRICIA CROKE

② ERECTOR SQUARE | OCT. 13 + 14  
DRAWING

## 46 CLAUDIA CRON

① PASSPORT | OCT. 6 + 7  
WEST COVE STUDIOS  
30 ELM ST., WEST HAVEN  
OIL

This body of work is concerned with the passage of time and moments of transformation. These pieces intend to suggest that energy and abandonment can coexist simultaneously. The evocation of the inner light within these dignified structures is achieved through spray paint, acrylic, oils, and ink. Texture is achieved by routing deep grooves into wood signifying the stress modern society has put on the planet. Monoprints and mixed media explore sober thoughts regarding modern life.  
[www.claudiacron.com](http://www.claudiacron.com)



## 119 PHYLLIS CROWLEY

② ERECTOR SQUARE | OCT. 13 + 14  
PHOTOGRAPHY  
[www.phylliscrowley.com](http://www.phylliscrowley.com)

## 57 RYAN CYR

① PASSPORT | OCT. 6 + 7  
14 GILBERT ST., M102, WEST HAVEN  
STAINED GLASS

## 286 JP CULLIGAN

③ ALTERNATIVE SPACE | OCT. 20 + 21  
DRAWING / PRINTMAKING  
[www.jpculligan.com](http://www.jpculligan.com)

## 45 SUSAN D'ANGELO

① PASSPORT | OCT. 6 + 7  
WEST COVE STUDIOS  
30 ELM ST., WEST HAVEN  
COLLAGE



## 32 MATTY DAGRADI

① PASSPORT | OCT. 6 + 7  
WESTVILLE  
WATERCOLOR

44

## PAUL DAUKAS JR.

① PASSPORT | OCT. 6 + 7  
WEST COVE STUDIOS  
30 ELM ST., WEST HAVEN  
PRINTMAKING



12

## JENNIFER DAVIES

① PASSPORT | OCT. 6 + 7  
CITY GALLERY SOLO SHOW  
994 STATE ST., NEW HAVEN  
HANDMADE PAPER

My paintings and drawings refer to natural form—waves, rock faces, leaves. I am attracted to surfaces that have been altered by time, erosion, or disintegration. My process is to find the image by layering and revealing. I like to work collaboratively with materials and by crumpling and dyeing, allow the material to make its own image before I add my mark, trying to follow the lead of the drawing developing before me.



216

## RICHARD DAVIS

③ ALTERNATIVE SPACE | OCT. 20 + 21  
MIXED  
[www.ericksondavis.com](http://www.ericksondavis.com)



198

## LEILA DAW

② ERECTOR SQUARE | OCT. 13 + 14  
MIXED MEDIA

Mapping is a way of representing the convergence of place and movement, a means of imposing human ideas over the contours of the natural world, a system of filters through which we see the landscape, a process by which we attempt to make sense of mixed cultural and spatial nonsense. My structures, installations, paintings, and drawings map (in some form or other) the course of disasters, travels, myths, confusions, ruminations, stasis, change, and geological conditions.



120

## ISABELLE DAY

② ERECTOR SQUARE | OCT. 13 + 14  
OIL  
[www.cholakian.com/isabelle](http://www.cholakian.com/isabelle)

217

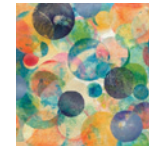
## GABRIELA MARGARITA DE JESUS

③ ALTERNATIVE SPACE | OCT. 20 + 21  
PAINTING

213

## KATHLEEN DEMEO

③ ALTERNATIVE SPACE | OCT. 20 + 21  
PRINTMAKING



121

## GEOFFREY DETRANI

② ERECTOR SQUARE | OCT. 13 + 14  
PENCIL, INK, ACRYLIC ON PAPER

My work is rooted in the natural world as construed by experience, imagination, and ideology. I am interested in the tenuous and temporary fit with which the things we have built have accommodated themselves to the fecund and resurgent force of the natural world. My pictures suggest landscapes captured in a state of flux, landscapes on the cusp or in the throes of explosive generation or devolution, they are geographies of entropy and zero-sum gain.  
[www.geoffreydetrani.com](http://www.geoffreydetrani.com)



122 **TONY DONOVAN**

② ERECTOR SQUARE | OCT. 13 + 14  
PHOTOGRAPHY

Photography in Ireland was my first work, in a place called Ardoyne, a housing project in North Belfast. It was a difficult place to take pictures, people were on-edge, wary, suspicious of a stranger. Street scenes, the friends I made, mostly children. I think of myself as an artistic photographer looking to make expressive, poetic pictures from life. For the last five years I've taken pictures of the games and fans at a summer basketball tournament.

[www.connecticutweddingphotographer.com](http://www.connecticutweddingphotographer.com)

123 **KAREN DOW**

② ERECTOR SQUARE | OCT. 13 + 14  
ACRYLIC

[www.karendow.com](http://www.karendow.com)

199 **LINDA DRAZEN**

② ERECTOR SQUARE | OCT. 13 + 14  
WATERCOLOR

218 **THOMAS DREW**

③ ALTERNATIVE SPACE | OCT. 20 + 21  
PENCILS/COLORED PENCILS

124 **EMILIA DUBICKI**

② ERECTOR SQUARE | OCT. 13 + 14  
PAINTING

67 **CONRAD DUENKEL**

① PASSPORT | OCT. 6 + 7  
103 CLINTON AVE., FAIR HAVEN  
BLOWN GLASS

[www.fairhavenglass.com](http://www.fairhavenglass.com)

125 **LAMBERT EDELMANN**

② ERECTOR SQUARE | OCT. 13 + 14  
PRINTMAKING

My art focuses on the twofold nature of Islamic civilization, both dominating and dominated. My paintings and monoprints are inspired by the millennia-old geometric patterns of Islam. In my art, the millennia-old geometric designs are distorted and altered to reveal the potential of new ways to look at the past without refusing it. I use bold colors and alter the lines of the rigid design to distort the perfection.



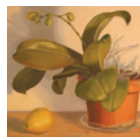
49

**EILEEN EDER**

① PASSPORT | OCT. 6 + 7  
WEST COVE STUDIOS  
30 ELM ST., WEST HAVEN  
PAINTING

I am inspired by light and how it reveals objects and nature with an endless variety of color and value.

[www.eileeneder.com](http://www.eileeneder.com)



39

**CHRIS ENGSTROM**

① PASSPORT | OCT. 6 + 7  
910 WHALLEY AVE., 1B, WESTVILLE  
PAINTING

219

**PAM ERICKSON**

③ ALTERNATIVE SPACE | OCT. 20 + 21  
MIXED

[www.ericksondavis.com](http://www.ericksondavis.com)

126

**THEA ERNEST**

② ERECTOR SQUARE | OCT. 13 + 14  
PEN

My interest in cartooning stems from listening and watching; some of it is autobiographical. There is humor, venom, goofiness, and wonder. I draw to solve mysteries, or at least dig into them. I like the quiet of drawing, clean paper, the scale of the work, and how it fits in my workspace. Cartooning is a way to wed writing and lines to tell stories. I enjoy crafting the words as well as the shapes.



220

**SUSAN ERNST**

③ ALTERNATIVE SPACE | OCT. 20 + 21  
PRINTMAKING

I am happiest and most content when I am taking in the colors and forms of nature in its various manifestations. Flowers, trees, birds, butterflies, and insects surround me. Similarly, working with color, texture, layers, patterns, paper, paint, pencils, and inks intrigues and engages me. Combining my love for nature with the mediums of papermaking, drawing, printmaking, and collage, I am able, to some degree, to capture the moments that inspire me.

[www.susanernst.blogspot.com](http://www.susanernst.blogspot.com)

221 **CAMILLE ESKELL**

③ ALTERNATIVE SPACE | OCT. 20 + 21  
DRAWING/PAINTING

127 **CHAD ETTING**

② ERECTOR SQUARE | OCT. 13 + 14  
ACRYLIC

128

**DANIEL EUGENE**

② ERECTOR SQUARE | OCT. 13 + 14  
PEN & INK

33

**ROXANNE FABER SAVAGE**

① PASSPORT | OCT. 6 + 7  
WEST COVE STUDIOS  
30 ELM ST., WEST HAVEN  
PRINTMAKING, DRAWING

222 **JOHN FALLON**

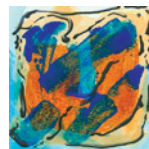
③ ALTERNATIVE SPACE | OCT. 20 + 21  
SCULPTURE, WOOD

129 **CATHY FARRELL**

② ERECTOR SQUARE | OCT. 13 + 14  
COLLAGE

I make art for fun and self-expression. I am currently a student of abstract collage and painting. My focus has been primarily on small pieces, but I've recently begun an exploration of working larger. I enjoy the order-from-chaos nature of collage, the free-form, unfettered nature of abstraction, and putting the two together.

[www.CathysGardenOfArtfulDelights.blogspot.com](http://www.CathysGardenOfArtfulDelights.blogspot.com)

21 **ANOKA FARUQEE**

① PASSPORT | OCT. 7 ONLY  
213 CENTRAL AVE., NEW HAVEN  
ACRYLIC

[www.anokafaruqee.com](http://www.anokafaruqee.com)

223 **JOE FEKIETA**

③ ALTERNATIVE SPACE | OCT. 20 + 21  
OIL PASTEL

[www.addalinedesign.com](http://www.addalinedesign.com)

3

**SILAS FINCH**

① PASSPORT | OCT. 6 + 7  
39 CHURCH ST., 3H, NEW HAVEN  
SCULPTURE, MIXED MEDIA, COLD CONNECTION  
[www.silasfinch.com](http://www.silasfinch.com)



224

**JOAN FITZSIMMONS**

③ ALTERNATIVE SPACE | OCT. 20 + 21  
PHOTOGRAPHY

The work presented in my portfolio meanders through varying series, but one thing has always led to another. I've examined the tenuous, ebbing boundaries between reality and perception. I've asked questions about human relationships, the nature of home, my relationship to nature, and the significance of the quotidian. The ordinary act of living is endlessly complex and uncertain. It is through the ordinary that, for me, the world resonates.

[www.joanfitzsimmons.com](http://www.joanfitzsimmons.com)



201

**JANE GILMAN FLEISCHNER**

③ ALTERNATIVE SPACE | OCT. 20 + 21  
ACRYLIC ON CANVAS

294

**ROBERT FORT**

③ ALTERNATIVE SPACE | OCT. 20 + 21  
OIL CRAYON

Robert Fort has spent a lifetime capturing the essence of the beautiful world around him. That world has included cities, the sea, the suburbs, the sound, the river and the endless parade of lovable critters that he has captured. Not in jars. With his oil drawings, with photographs, and in words. His goal is to produce work that satisfies the moment of creation, and with luck, people.



130

**OI FORTIN**

② ERECTOR SQUARE | OCT. 13 + 14  
PRINTMAKING

Love what you do, do what you love. Please come and visit my studio.  
[www.oi.fortin.home.comcast.net](http://www.oi.fortin.home.comcast.net)



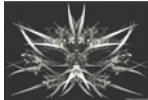
16 **ANDREW FRANCIS**  
 ① PASSPORT | OCT. 7 ONLY  
 91 SHELTON AVE., NEW HAVEN

131 **KATHRYN FRUND**  
 ② ERECTOR SQUARE | OCT. 13 + 14  
 PAINTING

My paintings and assemblages are inquiries into the intricate triangular relationship between nature, science, and spirituality; they are spacial ecotones. It is through the movement of paint and reconfiguration of objects and materials that the finished panel begins to heal, bridge, and restore itself. The work becomes a spiritual as well as material exploration into the nature of our relationships and presence in the landscape.  
[www.kathrynfrund.com](http://www.kathrynfrund.com)



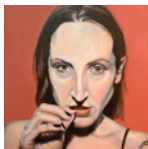
193/225 **FRANCINE FUNKE**  
 ② ERECTOR SQUARE | OCT. 13 + 14  
 ③ ALTERNATIVE SPACE | OCT. 20 + 21  
 DIGITAL COMBINES  
[www.franartstudio.com](http://www.franartstudio.com)



11 **MAURA GALANTE**  
 ① PASSPORT | OCT. 6 + 7  
 CHRISTOPHER MARTIN'S RESTAURANT  
 860 STATE ST., NEW HAVEN  
 PRINTMAKING

132 **JEAN GALLI**  
 ② ERECTOR SQUARE | OCT. 13 + 14  
 ACRYLIC/OIL

Faces are my passion; I imagine them in bold strokes of color and light. Though faces remain my passion, in recent years I have expanded my subjects to include figurative and wildlife paintings. My goal is always to draw viewers in, create a feeling when they look at the colors, the texture, and the expressions—the whole composition reaching out to inspire imagination, create a mood, and ultimately tell a story.  
[www.jeanbronsongalli.com](http://www.jeanbronsongalli.com)



35 **MICHAEL GALVIN**  
 ① PASSPORT | OCT. 6 + 7  
 904 WHALLEY AVE, APT#1, NEW HAVEN  
 ③ ALTERNATIVE SPACE | OCT. 20 + 21  
 My most recent work, the *Apollo and Daphne* series, uses the end of the Greek myth as a starting point to explore the many ways in which we are connected to each other and the natural world.  
[www.galvinmichael.com](http://www.galvinmichael.com)

50 **LAURA GARDNER**  
 ① PASSPORT | OCT. 6 + 7  
 WEST COVE STUDIOS  
 30 ELM ST., WEST HAVEN  
 WATERCOLOR



133 **CHRIS GARDNER**  
 ② ERECTOR SQUARE | OCT. 13 + 14  
 PHOTOGRAPHY  
[www.chris-gardner.com](http://www.chris-gardner.com)

134 **PETER GARDNER**  
 ② ERECTOR SQUARE | OCT. 13 + 14  
 OIL ON CANVAS

I started painting as a way of approaching the spiritual through an act of creation. Finding the higher power is like trying to find the perfect line—spiritual perfection can be attempted, surrounded, sketched, and stroked, almost never achieved; but the central truth—the perfect line—can be suggested to the imagination. Like the core of a poetic metaphor, the truth, the line, is revealed. My works are in nature mystical and metaphysical.



226 **GREG GARVEY**  
 ③ ALTERNATIVE SPACE | OCT. 20 + 21  
 COMPUTER-BASED DIGITAL VIDEO INSTALLATIONS  
 Good art should look as if there was some struggle in its making. Good art is not easy to make. It transcends ideas. Good art should be a little controversial. Good art has a little bit of magic in it.

227 **MEG GIANNOTTI**  
 ③ ALTERNATIVE SPACE | OCT. 20 + 21  
 RECYCLED /UPCYCLED ART

228 **CRAIG GILBERT**  
 PEN & INK  
 ③ ALTERNATIVE SPACE | OCT. 20 + 21  
 Craig is known as “that bubble guy,” a tag he received for his works entitled *FLOW*. In those pieces, hand drawn “bubbles” were drawn to capture a flowing feeling. *FLOW TO...* is a continuation of those works. The bubbles were simplified and whittled down to one; a perfect circle. These new works are brush and ink circles with an inspiration from the enso circles of Zen calligraphy. Each piece is one of its kind.

230 **ROBIN GILMORE**  
 ③ ALTERNATIVE SPACE | OCT. 20 + 21  
 MIXED MEDIA/JEWELRY

I believe as artists we have the ability and responsibility to create a voice for what is true to the nature of our universe. It gives the viewer an opportunity to explore the creative process and find some connection to themselves. Sometimes the creative process inspires me to move in various directions with paint or assemblage using found objects or to focus on the subject matter through the magnified inspection of the camera lens.  
[www.etsy.com/shop/madeinbridgeport](http://www.etsy.com/shop/madeinbridgeport)



36 **ALLAN GREENIER**  
 ① PASSPORT | OCT. 6 + 7  
 WESTVILLE, NEW HAVEN  
 PRINTMAKING

135 **ROBERT GREGSON**  
 ② ERECTOR SQUARE | OCT. 13 + 14  
 WOOD

My work is a hinge between artist and audience. The pieces are invitations to be involved. By being able to turn a panel, plywood wall constructions give the viewer permission to touch the piece and thus become an active player. Geometric grids allow the work to be rearranged in a variety of ways thus never actually being “finished”—or frozen into one single image. The work is continually reinterpreted and refreshed through those who encounter it.  
[www.bobgregson.com](http://www.bobgregson.com)



136 **KEN GRIMES**  
 ② ERECTOR SQUARE | OCT. 13 + 14  
 OIL

5 **STEPHEN GROSSMAN**  
 ① PASSPORT | OCT. 6 + 7  
 39 CHURCH ST., NEW HAVEN  
 PAINT  
[www.sgrossman.net](http://www.sgrossman.net)



76 **DAVID GROSZ**  
 ① PASSPORT | OCT. 6 + 7  
 14 GILBERT ST., WEST HAVEN  
 FURNITURE, WOOD

65 **JOSEPH GUDEMI**  
 ① PASSPORT | OCT. 6 + 7  
 68 MULBERRY HILL ST., HAMDEN  
 WOOD, METAL, PLASTIC

137 **SARAH GUSTAFSON**  
 ② ERECTOR SQUARE | OCT. 13 + 14  
 PAINTING/MIXED MEDIA

231 **ELLEN HACKL FAGAN**  
 ③ ALTERNATIVE SPACE | OCT. 20 + 21  
 PAINTING

Through an interactive game, viewers select the color(s) that best represent each note in the familiar Do Re Mi musical scale. Documenting their responses in the form of photographs and notes in journals, I have distilled the data that has been gathered and have been painting series based on these findings. The paintings introduce a wonderful completion to this pseudo-scientific investigation and celebrate painting and color and the breadth of their communicative potential.

232 **GEORGE HALE**  
 ③ ALTERNATIVE SPACE | OCT. 20 + 21  
 MIXED

29 **MISTINA & LUKE HANSCOM**  
 ① PASSPORT | OCT. 6 + 7  
 1175 STATE ST., #212, NEW HAVEN  
 PHOTOGRAPHY

190.5 **BARBARA HARDER**  
 ② ERECTOR SQUARE | OCT. 13 + 14  
 PRINTMAKING

Based on observations of nature, I use the process of printmaking to transform the images via installations with unusual juxtapositions. Some images dance across the wall on angular wood reliefs, while others are printed on translucent, billowing paper. The dialogue of disparate yet related imagery offers the viewer both a sense of energy and serenity and invites one to explore the singularity of form and see into surprising new spaces.



**ARTSPACE**  
50 ORANGE STREET  
OCT. 5 - 21  
203.772.2709

**Main Exhibition & The Artspace Lot**  
**GRAND OPENING NIGHT:**  
**Oct. 5, 5–8 pm**

**I-95**  
Take exit 48 to I-91 North. Follow the directions from I-91, below.

**I-91**  
Take Exit 3, Trumbull St. Turn left onto Orange. Turn left onto Elm. Turn right onto State. Turn right onto Crown. See Parking, below.

**MERRITT PARKWAY**  
Take exit 59 to merge onto CT-69, Whalley Ave. Turn right onto Whalley and continue for 3 miles. Whalley merges into Broadway, which merges into Elm. Take Elm to State, turn right onto Crown. See Parking, below.

**PARKING AT ARTSPACE**  
Parking is available in several lots all within a few blocks of Artspace, including the LAZ lots on either side of Crown between State and Orange and the ProPark lot in back of Artspace on Crown St.

**BY TRAIN OR BUS**  
New Haven's Union Station is less than 10 minutes by foot from Artspace. MTA Metro North and Amtrak trains, as well as Greyhound and Peter Pan buses, serve Union Station.

To walk to Artspace from Union Station, walk north on Union, which becomes State after the underpass. State forks immediately; bear left. Then take a left onto Crown. Artspace is at Crown and Orange, on your right  
Taxis are usually waiting at Union Station, or call Metro Taxi, 203-777-7777.

**ERECTOR SQUARE**  
315 PECK STREET  
OCT. 13 + 14

**I-95**  
Take exit 48 to I-91 North. Follow the directions from I-91, below.

**I-91 NORTH**  
Take Exit 5, State St/Fair Haven. At the bottom of the ramp, go straight. Take the second right onto Blatchley Ave. First left onto Peck St.

**I-91 SOUTH**  
Exit 6 onto Willow St. Take a left at the bottom of the ramp, drive under I-91. As you cross State, Willow becomes Blatchley. At the next intersection, turn left onto Pack St.

**MERRITT PARKWAY NORTH**  
Take exit 54 to I-95 North. On I-95, take exit 48 to I-91 North. Follow directions from I-91 North, above.

**MERRIT PARKWAY SOUTH**  
You can take exit 67 or 63, both merge onto I-91 South. Follow directions from I-91 South, above.

**PARKING**  
There are ample parking lots directly in front of Erector Square and behind it. To access the back lot, use the driveway on Blatchely Avenue between State and Peck.

**ALTERNATIVE SPACE**  
40 SARGENT STREET  
OCT. 20 + 21

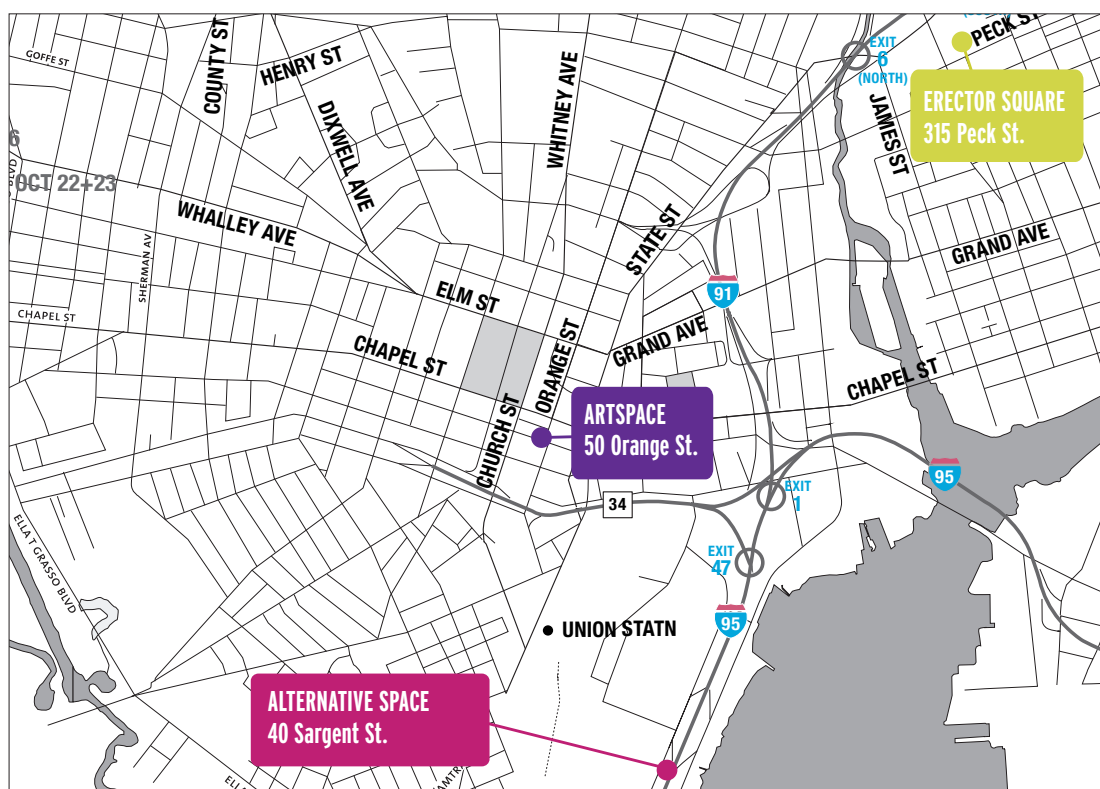
**I-95 NORTH**  
Take exit 6. Merge onto CT 34 W via exit 47. Take Exit 1 to Downtown/New Haven. Drive straight onto N. Frontage Rd. Turn right on Church. Turn left on Crown. Take 2nd left onto College.

**I-91 SOUTH**  
Take Exit 3, Trumbull St. Turn right on Trumbull. Turn left on Temple. Turn right on Crown. Take 1st left onto College St.

**FROM UNION STATION**  
Go northeast on Union Ave. toward Meadow St. Turn left on N. Frontage Rd. Turn right on Church. Turn left on Crown. Take 2nd left onto College.

**WALKING FROM ARTSPACE (1.6 MILES)**  
Exit Artspace and head across the street onto Crown St. Walk one block and take the first right onto State St. After two blocks, State St. becomes Union Ave. / US Route 1. After 0.4 miles, take the first left onto Church St. South. After 0.5 miles, take the first right onto Sargent Dr. Walk 0.5 miles to 40 Sargent St.

**PARKING**  
The former Gateway Community College and Register lots are adjacent to the CWOS entrance and free.



## CWOS T-SHIRTS!

Get them early, in our shop or online  
at [www.artspacenah.org/shop.asp](http://www.artspacenah.org/shop.asp).

# Visit with Friends Yale University Art Gallery

Expanded museum opens  
December 12, 2012

Free and open to the public

Tuesday-Sunday  
1111 Chapel Street, New Haven, Conn.  
artgallery.yale.edu



Visual art classes  
for all ages and  
experience levels

## CREATIVE ARTS WORKSHOP

80 Audubon St, New Haven | 203.562.4927 | creativeartsworkshop.org

# Yale University

Salutes the  
**15<sup>th</sup> Annual**  
**City-Wide Open Studios (CWOS)**

*For all their years of service  
and support of the  
New Haven community*



Contributing to a  
Strong New Haven  
onhsa.yale.edu

"Tour de force  
would be an understatement."  
— THE BOSTON GLOBE



## SATCHMO AT THE WALDORF

BY TERRY TEACHOUT DIRECTED BY GORDON EDELSTEIN

WHAT YOU HEAR COME OUT A MAN'S  
HORN, THAT WHAT HE IS.

OCT 3 - NOV 4

LONG WHARF THEATRE

BOX OFFICE: 203-787-4282

WWW.LONGWHARF.ORG



A  
NAUGHTY  
COMEDY

DIRECTED BY & STARRING

KATHLEEN  
TURNER

## THE KILLING OF SISTER GEORGE

BY FRANK MARCUS  
A NEW ADAPTATION BY JEFFREY HATCHER

NOV 28 - DEC 23

233

**JAMES HARDY**③ ALTERNATIVE SPACE | OCT. 20 + 21  
SCULPTURE

Jim Hardy creates sculptures and illustrations whose narratives revolve around faith and social issues. His sculptures are buildings made out of wood that house free standing panels on which he paints people acting out the narrative. Found materials, cardboard, metal, toys, and electric light are also used in the creation of this art. The illustrations use wit and humor to captivate the audience while the sculptures are more solemn in nature, evoking a feeling of deep reflection.

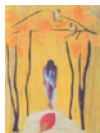
www.hardy-art.com

138 **SIDNEY HARRIS**② ERECTOR SQUARE | OCT. 13 + 14  
ACRYLIC

The Alphabet Series; A to Z. What's your letter?

234 **LOUISE HARTER**③ ALTERNATIVE SPACE | OCT. 20 + 21  
CLAY51 **KEVIN HARTY**① PASSPORT | OCT. 6 + 7  
WEST COVE STUDIOS  
30 ELM ST., WEST HAVEN  
FABRIC71 **CLYMENZA HAWKINS**① PASSPORT | OCT. 6 + 7  
185 FRONT STREET  
COLLAGE

My current work is on transformations within the interior of a woman's soul from the series, *WomenFolk of the Underground Forest*. The images I produce are inspirations from faerie/folk tales, fables, and mythology including writers Zora Neale Hurston, Angela Carter, Clarissa Pinkola Estes, Octavia Butler, Oscar Wilde, and James Baldwin. My work will also be featured on renewed furniture, jars, vases, altar boxes, journals, and booklets.

139 **CHAM HENDON**② ERECTOR SQUARE | OCT. 13 + 14  
ACRYLIC235 **SARAH HENDON**③ ALTERNATIVE SPACE | OCT. 20 + 21  
PRINTMAKING

202

**ELISSA HINE**③ ALTERNATIVE SPACE | OCT. 20 + 21  
PRINTMAKING

56

**WILLIE HOFFMAN**① PASSPORT | OCT. 6 + 7  
14 GILBERT ST., WEST HAVEN  
FURNITURE

289

**GRAHAM HONACKER**② ERECTOR SQUARE | OCT. 13 + 14  
COLLAGE236 **BRIAN HUFF**③ ALTERNATIVE SPACE | OCT. 20 + 21  
COLLAGE

I want to reflect and comment on the current themes that affect us today with a time that I feel led to it—that being the 50's era of patriotism and McCarthy politics leading to 60's rebellion and 70's drug culture... then the cycle back to conservatism and the "Me Decade"... back to an era of protest in the 90's to, finally, current day where all these elements interact and quarrel.

237 **ERIC IANNUCCI**③ ALTERNATIVE SPACE | OCT. 20 + 21  
ASSEMBLAGE238 **NICOLE IOVANNE**③ ALTERNATIVE SPACE | OCT. 20 + 21  
PHOTOGRAPHY

*Illusory Places* is a second series of composite images gathered from historical, natural, and spectacle-driven places. Focusing on color and the archetypal qualities that are inherent in the objects photographed, these images were assembled to create an ethereal narrative, perhaps personally imagined by the viewer.

140 **JULITA JANUSZEWSKA**② ERECTOR SQUARE | OCT. 13 + 14  
INDIA INK

141

**NOE JIMENEZ**② ERECTOR SQUARE | OCT. 13 + 14  
PAINT

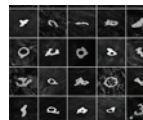
I am currently working with reticulated structures (nets). I was trained as a stone carver. Henry Moore said, "The first hole made through a piece of stone is a revelation." The idea of holes led me to thinking about volume and space, which led to my focus on paper installations—when installed they take up a lot of room, but when archived they can fit into a small plastic bin. My work focuses on adaptive problem-solving.

142

**KEITH JOHNSON**② ERECTOR SQUARE | OCT. 13 + 14  
PHOTOGRAPHY

My new work is about extending the photographic document beyond the single print using multiple images. Extended imagery is similar to what a poet might do when combining paragraphs, or a filmmaker does when splicing film into a montage. The camera documents better than any device the detail and surface of objects, places, and ideas. Time, light, color, and comparison changes during the extended time spent looking.

www.keithjohnsonphotographs.com



143

**JILAIINE JONES**② ERECTOR SQUARE | OCT. 13 + 14  
3D

For more background and reviews please Google Jilaine Jones.



144

**CHRISTOPHER JOY**② ERECTOR SQUARE | OCT. 13 + 14  
SCULPTURE

145

**CLINT JUJKALA**② ERECTOR SQUARE | OCT. 13 + 14  
PAINTING

146

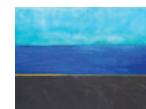
**JEAN ALEXANDRE KANDALAFT**

② ERECTOR SQUARE | OCT. 13 + 14

147

**KATHY KANE**② ERECTOR SQUARE | OCT. 13 + 14  
PAINTING

Re-exploring watercolors and experimenting with the effect of the reaction of the pigments to each other, and various paper, is my latest interest. By working on a large, bold scale these reactions are most evident. These paintings distill the essence of the landscape and the beauty of paint.



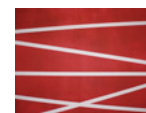
239

**KELLEY KAPFER-KAPP**③ ALTERNATIVE SPACE | OCT. 20 + 21  
PAINTING & DRAWING

240

**NESTOR KAPLAN**③ ALTERNATIVE SPACE | OCT. 20 + 21  
OILS

When I start a piece I become obsessive; with a rage and motivation that fuels me until I can stand back and see my work. A piece can be ever changing and I have been known to destroy/alter my work as time passes by. But to be able to let a piece stand on its own is the most inspiring. Never taught and hate "in the lines."



34

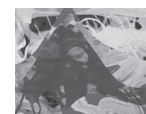
**JOHN KEEFER**① PASSPORT | OCT. 6 + 7  
904 WHALLEY AVE., NEW HAVEN  
PAINTING

148

**ZACHARY KEETING**② ERECTOR SQUARE | OCT. 13 + 14  
PAINTING

Here is the challenge: be brave, struggle to build a vivid document. Courageously push the materials to a surprising place, accept an art of rough approximation, of free-improvisation, where careful measurements may be entirely inappropriate. If successful, the paintings will make visual what is within. The scenes are a mash-up of orchestrated mayhem. I fight against boundaries and obsess over edges. This is an art of precision and abandon.

www.zacharykeeting.com



241

**LISA KERESZI**③ ALTERNATIVE SPACE | OCT. 20 + 21  
PHOTOGRAPHY  
www.lisakereszi.com

257 **KHYAL**  
 ③ ALTERNATIVE SPACE | OCT. 20 + 21  
 DIGITAL IMAGING

149 **JAIME KRIKSCIUN**  
 ② ERECTOR SQUARE | OCT. 13 + 14  
 GLASS

I use the copper foil method of stained glass construction in building my pieces. My body of work consists of panels of stained glass meant to filter light, depicting everyday objects rendered in glass. Many of my window designs are framed within salvaged window panes. My work is composed of a wide variety of glasses, from machine rolled, to handblown, to glass no longer in production, to pieces rescued from old churches.

[www.flickr.com/photos/jaksdesigns](http://www.flickr.com/photos/jaksdesigns)



150 **JANET LAGE**  
 ② ERECTOR SQUARE | OCT. 13 + 14  
 GRAPHITE, INK ON CANVAS

I combine a disciplined, formal painting process with the raw spontaneity of chance and intuition. I approach each piece with an understanding of a physical image and allow internal forces of perception and impulse to collide with the external forces of possibility and playfulness. My work remains driven by the materiality of paint. Language found its way into my work and dances alongside. Text serves to energize the physicality of the painted surface.  
[www.janetlage.com](http://www.janetlage.com)



196 **MARIA LARA-WHELPLEY**  
 ② ERECTOR SQUARE | OCT. 13 + 14  
 ENCAUSTIC

I paint for the dialogue. Making art is the manifest part of an ongoing conversation. My immediate goal within the picture space is to merge figurative moments with personal geometric awareness. My exploration and understanding of the relationships and identities of point, line, and grid—although abstract (and often duplicitous) 'structures' we impose on an organic world - serve as starting points for work. Oil, wax, graphite, and charcoal are vehicles of choice.



197 **HANNAH LECKMAN**  
 ② ERECTOR SQUARE | OCT. 13 + 14  
 CERAMICS

I work primarily on the wheel, although I enjoy some handbuilding and sculptural detail on pottery as well. I love what is round, what swirls, like music. My work tends to be functional, because I want my objects to be useful as well as beautiful. I make plates and bowls, vases and candlesticks, casseroles, and goblets. The variety and scope of work in clay is almost endless and I am always experimenting.



293 **DEREK LEKA**  
 ③ ALTERNATIVE SPACE | OCT. 20 + 21  
 PAINTING

151 **MARY LESSER**  
 ② ERECTOR SQUARE | OCT. 13 + 14  
[www.marylesser.com](http://www.marylesser.com)



152 **MARTHA LEWIS**  
 ② ERECTOR SQUARE | OCT. 13 + 14  
 PENCIL

My work explores the realm of inventions and inventors, borrowing elements from engineering diagrams, floor plans, patents, maritime charts, and other types of informational drawing. These images get combined into sprawling hybrid constructs, using formats derived from religious diagrams such as Mandalas and Tantric drawings. I have begun to invoke plant and insect forms, structures and surfaces, as my mechanisms mutate into something hovering between the organic and the constructed.  
[www.marthalewis.com](http://www.marthalewis.com)



75 **MARTY LILLIS**  
 ① PASSPORT | OCT. 6 + 7  
 261 CLIFTON ST.  
 AIRBRUSH, ACRYLIC

52 **EVIE LINDEMANN**  
 ① PASSPORT | OCT. 6 + 7  
 WEST COVE STUDIOS  
 30 ELM ST., WEST HAVEN  
 PRINTMAKING

153 **LINDA LINDROTH**  
 ② ERECTOR SQUARE | OCT. 13 + 14  
[www.lindalindroth.com](http://www.lindalindroth.com)



154 **ROBERT LISAK**  
 ② ERECTOR SQUARE | OCT. 13 + 14  
 PHOTOGRAPHY



# Marie Antoinette

OCTOBER 26 TO NOVEMBER 17

A play by David Adjmi  
Directed by Rebecca Taichman

“TERRIFIC!”  
WGBH BOSTON

“DAZZLING!”  
WBUR BOSTON

“A WILD RIDE!”  
THE BOSTON PHOENIX

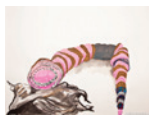
YALERE.P.ORG  
203.432.1234  
YALERE.P@YALE.EDU  
YALE REPERTORY THEATRE  
1120 CHAPEL STREET

facebook.com/yalerep

OC NOV 10 AT 2PM AD NOV 17 AT 2PM



- 195.5 **DAVID LIVINGSTON**  
② ERECTOR SQUARE | OCT. 13 + 14  
MIXED MEDIA



- 245 **FABER LORNE**  
③ ALTERNATIVE SPACE | OCT. 20 + 21  
INSTALLATION

Artistic production is for me a space-time favorable to new negotiations between reality and perception. Like the unconscious does, I capture images. The topography of desire is traced by coupling objects together in order to explore the mechanisms at work, such as anxiety, alienation, speech, and perception. Free, euphoric, incoherent, I joyously redistribute signs and draw the first lines of my artistic journey by mapping libidinal intensity through rudimentary materials specific to construction work.

[www.faberstoolbox.com](http://www.faberstoolbox.com)



- 246 **KARLEEN LOUGHRAN**  
③ ALTERNATIVE SPACE | OCT. 20 + 21  
PAINT  
[www.karleenloughran.com](http://www.karleenloughran.com)



- 247 **BETH LOVELL**  
③ ALTERNATIVE SPACE | OCT. 20 + 21  
WATERCOLOR

Jane Hirshfield writes: "There is more and more I tell no one, strangers nor loves. This slips into the heart without hurry, as if it had never been." I draw from my daily life: weather, errands, and family. I record visually arresting clouds, people lost in concentration, or random patterns in puddles or shadows; but not necessarily the events you would recall if someone asked about your day.

- 155 **REBECCA LOWRY**  
② ERECTOR SQUARE | OCT. 13 + 14  
OIL PAINTING

- 156 **WILL LUSTENADER**  
② ERECTOR SQUARE | OCT. 13 + 14  
PAINT  
These are representational oil paintings and mixed media on paper that present the cut-outs as still life objects placed on minimally rendered surfaces. The house shapes are of particular interest to me because they create multiple worlds, as their shapes reference urban/suburban dialogues or politics on one level, and literal tectonics on an altogether formal level. Some necessitate a journey of sorts, while others play off of a more kinetic energy of proximity.  
[www.wlustenader.com](http://www.wlustenader.com)



- 248 **ANDRES MADARIAGA**  
③ ALTERNATIVE SPACE | OCT. 20 + 21  
MIXED MEDIUM

My work has always been about pushing the boundaries of human expression and inner strength through painting. Growing up in two cultures has always been difficult for me, never fitting into one or the other. Art can surpass any barrier that society or our own stereotypes can make, because even though art is a lie, it holds no lies. It is our one crude judge and also our most intimate and pure savior.

- 249 **DAN MAKARA**  
③ ALTERNATIVE SPACE | OCT. 20 + 21  
ACRYLIC ON PANEL

- 31 **JORDAN NODELMAN**  
① PASSPORT | OCT. 6 + 7  
WESTVILLE, NEW HAVEN  
PHOTOGRAPHY

I am a contemporary, digital photographer. My photographs tend toward simplicity and minimalism. I am particularly drawn to compositions that often go unnoticed. My photographs bring the viewer into the world they move through each day but rarely stop to investigate or look to see. My recent body of work has been taken at various locations around North America and the Caribbean.  
[www.jmnphoto.com](http://www.jmnphoto.com)



Communities thrive when art and creativity inspire. At First Niagara, we are proud to support Artspace and the 15th Annual City-Wide Studios Festival to help the arts in New Haven thrive.

*What makes you thrive? Talk to us...visit any branch, [firstniagara.com](http://firstniagara.com) or 1-800-421-0004.*



250 **PARIS MANCINI**  
 ③ ALTERNATIVE SPACE | OCT. 20 + 21  
 PHOTOGRAPHY  
[www.parismancini.net](http://www.parismancini.net)

53 **BARBARA MARKS**  
 ① PASSPORT | OCT. 6 + 7  
 ③ ALTERNATIVE SPACE | OCT. 20 + 21  
 WEST COVE STUDIOS  
 30 ELM ST., WEST HAVEN  
 OIL  
[www.barbaramarks.com](http://www.barbaramarks.com)



251 **ARIELA MARTIN**  
 ③ ALTERNATIVE SPACE | OCT. 20 + 21  
 PHOTOGRAPHY

17 **KIARA MATOS**  
 ① PASSPORT | OCT. 6 + 7  
 ELI WHITNEY MUSEUM BARN  
 920 WHITNEY AVE., HAMDEN  
 I have fallen in love with clay and its possibilities. I work for the pleasure of feeling it and transforming it. Whenever I open the kiln after a firing I am always amazed by its magical transformation. I am always challenged by its uncontrollable conditions. Yet, sometimes, I have proven myself a very accurate predictor. Only sometimes! I also work for art and beauty— they feed me I need them.



27 **SUSAN MCCASLIN**  
 ① PASSPORT | OCT. 6 + 7  
 838 WHALLEY AVE, #12, NEW HAVEN  
 GRAPHIC DESIGN

252 **S MCGREGOR**  
 ③ ALTERNATIVE SPACE | OCT. 20 + 21  
 JEWELRY

70 **WILLIAM MEDDICK**  
 ① PASSPORT | OCT. 6 + 7  
 337 SUMMIT ST., FAIR HAVEN HEIGHTS  
 OIL  
[meddickart.webplus.net](http://meddickart.webplus.net)



157 **FETHI MEGHELLI**  
 ② ERECTOR SQUARE | OCT. 13 + 14  
 MIXED MEDIA  
 All my work is about the human condition. For the last two years, I have been mainly focusing on large installations: the *Boat People* series and the *Celebration of Life* series. In order for me to make the installations I have been doing large drawings, painting, and using found objects. I have also been painting and drawing on different fabrics, and learning the techniques of assemblage, with surprising and beautiful results.  
[www.fethimeghelli.com](http://www.fethimeghelli.com)

253 **DAVID MEL**  
 ③ ALTERNATIVE SPACE | OCT. 20 + 21  
 PAINTING  
[www.davidmel.net](http://www.davidmel.net)

158 **CHRISTIAN MILLER**  
 ② ERECTOR SQUARE | OCT. 13 + 14  
 PAINTING  
 The task of the artist is paradoxical by nature. He strives to create all at once the essence of an emotional moment to be recreated endlessly in the viewer's mind. In this sense the artist is defining the moment of the present to be recreated infinitely as far as the mind can imagine. As a photo captures a precise moment, the artist expresses the event and at the same time conveys the sense of that event.



159 **DENISE MILLER**  
 ② ERECTOR SQUARE | OCT. 13 + 14  
 JEWELRY  
 We are an expression of our inner selves. What we choose to wear tells the world who we are. Just as our thoughts shape our destiny, our physical image shapes our thoughts. In my art, I have combined both vintage and new materials to create unique, one-of-a-kind accessories of expression for the thoughtful individual.



160 **IRENE K. MILLER**  
 ② ERECTOR SQUARE | OCT. 13 + 14  
 PRINTMAKING  
 My work is influenced by Post Minimalism and Neo-Geo and focuses on the geometry of circles, rectangles, squares, and stripes as conceptual structure to a series of individual ideas. Layering forms relationships and mark-making can detail patterns that are experiential in life. My newest series concentrates on minuscule details in the electron-microscopic and cellular studies of the invertebrate eye influenced by Kandinsky's series *Several Circles*. This new work is a commentary on visual deterioration.  
[www.irenekemiller.com](http://www.irenekemiller.com)



254 **COURTNEY MILLER-RAO**  
 ③ ALTERNATIVE SPACE | OCT. 20 + 21  
 PENCIL

Moving my hands and creating art in multiple media is something I believe makes me a whole human being. Ever since I was a little girl, I have been moved by my surroundings and have worked to document these in the way my heart sees them. My main media tend to be portable, such as pencils, pastels, and small watercolor sets. I draw everywhere, whether it be in my home studio, at work, or outside.



66/161 **CHRISTOPHER MIR**  
 ① PASSPORT | OCT. 6 + 7  
 LAKE STREET, HAMDEN  
 ② ERECTOR SQUARE | OCT. 13 + 14  
 ACRYLIC  
 By Appointment only during Passport Weekend.  
 Call (203) 215-9770.



162 **MARIA MORABITO**  
 ② ERECTOR SQUARE | OCT. 13 + 14  
 PAINTING  
 My abstract compositions are inspired by the visual power of marks, lines, and rhythms of written languages found in ancient cultures, in the streets and on the walls of my native Italy, and in everyday life. I am also intrigued by the marks found in handwriting and signatures, since they reflect our individuality. I enjoy deconstructing handwriting to isolate and freely reassemble their elements to create an abstract "portrait of the mind."  
[www.morabitoart.com](http://www.morabitoart.com)



163 **LARRY MORELLI**  
 ② ERECTOR SQUARE | OCT. 13 + 14  
 OIL

164 **JEFF MUELLER**  
 ② ERECTOR SQUARE | OCT. 13 + 14  
 PRINTMAKING  
[www.dexteritypress.com](http://www.dexteritypress.com)

37 **SIGRUN MÜLLER**  
 ① PASSPORT | OCT. 6 + 7  
 55 FOUNTAIN ST., # 3, NEW HAVEN

166 **SUSAN NALLY**  
 ② ERECTOR SQUARE | OCT. 13 + 14  
 OIL  
 Currently unknown I think of my still life paintings as small reflections of complex relationships. Rendered in oil, they are spare statements where the distance between objects may indicate intimacy or detachment. Some participants take precedence, while others are relegated to supporting roles. The softened edges bind the objects to the sparse environment, joining the elongated shadows.  
[www.susanally.com](http://www.susanally.com)



255 **ALAN NEIDER**③ ALTERNATIVE SPACE | OCT. 20 + 21  
PAINTING

I believe that drawing is the foundation, basis, and jumping-off point for all of the visual arts. Throughout my career as a practicing artist, I have used drawing to flesh out and develop two- and three-dimensional ideas. Certain high-fashion images are repeated in my series of drawings. Through limiting the focus to accessories, I am able to explore and look closely at these icons in our social environment.

[www.alanneider.com](http://www.alanneider.com)

256 **RAHEEM NELSON**③ ALTERNATIVE SPACE | OCT. 20 + 21  
IPAD ILLUSTRATION77 **SUSAN NICHOLS**① PASSPORT | OCT. 6 + 7  
WEST COVE STUDIOS  
30 ELM ST., WEST HAVEN  
PRINTMAKING, DRAWING

Often the interaction of ground and process spark my images.

167 **MARGOT NIMIROSKI**② ERECTOR SQUARE | OCT. 13 + 14  
ACRYLIC ON CANVAS

This year I started painting abstract seascapes. I live on Branford Harbor and spend much of my time boating with my husband. I fell in love with the water when I was a teenager and moved to New Jersey from central Illinois. It is always beautiful. My hope is that my paintings bring others the sense of calm and beauty that I feel.

[www.margotnimiroski.com](http://www.margotnimiroski.com)

54 **DOUGLAS NYGREN**① PASSPORT | OCT. 6 + 7  
WEST COVE STUDIOS  
30 ELM ST., WEST HAVEN  
PHOTOGRAPHY38 **ANN OBERKIRCH**① PASSPORT | OCT. 6 + 7  
WESTVILLE VILLAGE, NEW HAVEN  
OIL204 **DIANA OFOSO**③ ALTERNATIVE SPACE | OCT. 20 + 21  
SOCIAALLY ENGAGED PRACTICE259 **JUDITH BARBOUR OSBORNE**③ ALTERNATIVE SPACE | OCT. 20 + 21  
MIXED MEDIA

As an artist working with texts, I am interested in ways of knowing. I am continually returning to the space where they meet. It is from this process that I gather inspiration from kinetic, sensory, emotional, psychological, intellectual, and spiritual information. I make these aspects of non-visual reality visible, as if staining the wind. I therefore consider the time I spend in my studio to be a form of research into consciousness.

[www.jboart.com](http://www.jboart.com)

6 **DAVID OTTENSTEIN**① PASSPORT | OCT. 6 + 7  
71 ORANGE ST., NEW HAVEN  
PHOTOGRAPHY

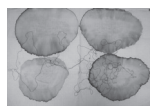
I consider myself an observer of the landscape—the natural, the built, and the somewhere in between. I'm not partial to one over the other. My observations, and the images which record them, reflect my curiosity about the landscape. My photographs address the human imprint on the land. My intent is not to judge—neither to condemn nor to celebrate—but to point out, to say, "hey, take a look at this."

[www.davidottenstein.com](http://www.davidottenstein.com)

168 **LIZ PAGANO**② ERECTOR SQUARE | OCT. 13 + 14  
PRINT/MIXED MEDIA

Accidental beauty inspires me. I love looking at textures and how they reveal a history. I am always searching for unexpected possibilities. My work magnifies moments—capturing movement, sometimes reactions or fusions. The part I can't control keeps me chasing/searching/moving. My process is about exploring interactions of chance and control, coincidence and intent.

[www.lizpagano.com](http://www.lizpagano.com)

62 **PAIER COLLEGE OF ART**① PASSPORT | OCT. 6 + 7  
20 GORHAM AVE., HAMDEN  
PAINTING

[www.paiiercollegeofart.edu](http://www.paiiercollegeofart.edu)

260 **ELLEN PAPCIAK-ROSE**③ ALTERNATIVE SPACE | OCT. 20 + 21  
PAINT

I am interested in how common visual icons and text associations progress into open-ended interpretations. My paintings, prints, and cut-outs draw on situational instances which bring another set of visual possibilities to mind. The cheeky paintings are playful (like a word game). At first glance, and with the knowledge of the artwork title, immediate understanding (often with accompanying laughter) is felt by the viewer. The twist, deeper meaning, is individual.

[www.ellenpaciakrose.com](http://www.ellenpaciakrose.com)

169 **SOPHIA PETERS**② ERECTOR SQUARE | OCT. 13 + 14  
OIL PAINTING

I paint from photographic images to create fragmented portraits to express a visual, emotional, and psychological element of disconnect. It also provides a dreamlike state of memory, inner reflection, and nostalgia. The figures reveal moments gone unnoticed. I use line to tie the fragments together, which give the painting a sense of symbolism, rhythm, and depth. My paintings express domesticity through showing the existence and relationships of people who inhabit one's environment.

[www.sophiapeters.com](http://www.sophiapeters.com)

211 **ALEXANDRA PHILLIPS**③ ALTERNATIVE SPACE | OCT. 20 + 21  
SCULPTURE40 **JACOB PONGRATZ**① PASSPORT | OCT. 6 + 7  
265 JUDWIN AVE., NEW HAVEN  
ACRYLIC ON CANVAS

The major goal in producing my art is to apply a primal energy that solidifies my experience as a human to canvas. A fluid approach of spontaneity and confusion is essential to my finished product. It is the reflection of one's self that matters most, using abstract forms to unbalance any preconceived notions of rationale. What little representations that do exist are merely fully developed forms.

[www.jacobpongatz.com](http://www.jacobpongatz.com)

261 **CALEB PORTFOLIO**③ ALTERNATIVE SPACE | OCT. 20 + 21  
VIDEO170 **MARK PREVITT**② ERECTOR SQUARE | OCT. 13 + 14  
METAL SCULPTURE

I try pretty hard.

[www.previttmetalworks.com](http://www.previttmetalworks.com)

205 **ELIZABETH PROTZMAN**③ ALTERNATIVE SPACE | OCT. 20 + 21  
ACRYLIC ON CANVAS171 **DERRICK QUEVEDO**② ERECTOR SQUARE | OCT. 13 + 14  
WATERCOLOR

Painting, like daydreaming, is a much more colorful way to process reality and observation; unlike daydreaming, it makes actual enduring objects out of ephemeral imagination (and inspires alliteration).

[www.derrickquevedo.weebly.com](http://www.derrickquevedo.weebly.com)

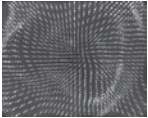


290 **MICHAEL QUIRK**  
 ③ ALTERNATIVE SPACE | OCT. 20 + 21  
 SCULPTURE

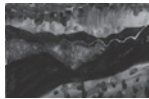


262 **CHRIS RANDALI**  
 ③ ALTERNATIVE SPACE | OCT. 20 + 21  
 PHOTOGRAPHY  
 I like to take pictures...a lot.  
[www.chrisrandallphotos.com](http://www.chrisrandallphotos.com)

263 **THOMAS REGNER**  
 ③ ALTERNATIVE SPACE | OCT. 20 + 21  
 My art combines the scientific and the artistic aspects of my personality to play and experiment with the natural world. I explore the beauty and richness of natural phenomena, my ability to control natural phenomena, and the limitations of that control. My current work utilizes water condensation as a medium. Made entirely of water, the condensation images are ephemeral, evaporating and reappearing in response to temperature and humidity.  
[www.thomasregner.com](http://www.thomasregner.com)



264 **VALERIE RICHARDSON**  
 ③ ALTERNATIVE SPACE | OCT. 20 + 21  
 OIL/MIXED  
 Latitude 41.3 Project: My work is frequently voyeuristic, surreptitiously watching other people's lives from afar. I'm just starting to play around with an idea where I would "travel" around the world, via the internet, along New Haven's latitude of 41.3 degrees, which goes through Portugal, Spain, Corsica, Italy, Albania, Macedonia, Greece, Turkey, Georgia, Azerbaijan, Turkmenistan, Uzbekistan, Kyrgyzstan, Kazakhstan, China, North Korea, and Japan.  
[www.valerierichardson.com](http://www.valerierichardson.com)

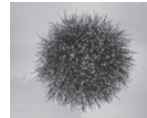


265 **STEPHEN RODRIGUEZ**  
 ③ ALTERNATIVE SPACE | OCT. 20 + 21  
 STONEWARE POTTERY  
 I make stoneware and porcelain pottery reflecting and inspired by the classic forms which the history of ceramics has presented to me, particularly the ancient Asian, Chinese, Korean, and Japanese pottery. The course, or path, on which one embarks, within the confines of a certain tradition, are many-fold and History is always presenting itself in a new light. This is the challenge that provokes me towards new works in clay.  
[www.stephenrodriguezpottery.com](http://www.stephenrodriguezpottery.com)



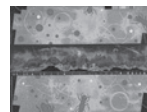
267 **CYNTHIA RUBIN**  
 ③ ALTERNATIVE SPACE | OCT. 20 + 21  
 DIGITAL PRINT  
 How do we navigate the natural world of elements both large and small? My work is an investigation of plankton, the tiniest bits of underwater life, and of mountains, the largest of the natural elements that surround us. What are the cultural influences that shape how we experience nature? Stone walls, narrow streets, dusty roads, magnificent buildings, all of these are part of our visual lives and affect what we bring to nature.  
[www.cbrubin.net](http://www.cbrubin.net)

172 **JOSEPH SACCIO**  
 ② ERECTOR SQUARE | OCT. 13 + 14  
 SCULPTURE  
 My sculptures are in a variety of sizes and materials. The majority of my work uses natural materials, primarily wood, and found objects, joined together in a primitivistic manner, expressing personal feelings associated with myth and ritual, loss and rebirth. The often brutal form and meaning of these solemn works are in contrast to the highly colored, brash, and ironically humorous style of those pieces constructed of synthetic materials.



268 **RUTH SACK**  
 ③ ALTERNATIVE SPACE | OCT. 20 + 21  
 ENCAUSTIC PAINT  
 My latest work has been about insides and outsides. I choose elements of each, such as what's above and below the skin of people and animals. Outsides are expansive and insides are heavily detailed. During my open studio time at the Alternative Space I intend to create encaustic paintings about crystals: their shapes, structures, uses, and outer appearances. These will be spontaneous works on paper using encaustic and monotype techniques.

2 **GERALD SALADYGA**  
 ① PASSPORT | OCT. 6 + 7  
 39 CHURCH ST., NEW HAVEN  
 PAINTING  
 I consider myself a landscape painter, but not in the traditional sense. My gaze went from looking outwards to looking back and within the landscape. I imagined landscapes as viewed from beyond the planet looking back on to it, and from within it looking out. As a painter, I believe, one can no longer rely on 19th century formulas for painting landscapes that lack the encroachment of sprawl, pollution, and natural and human devastation.  
[www.geraldсалadyga.com](http://www.geraldсалadyga.com)



173 **KERRI SANCOMB**  
 ② ERECTOR SQUARE | OCT. 13 + 14  
 PRINTMAKING

269 **NOEL SARDALLA**  
 ③ ALTERNATIVE SPACE | OCT. 20 + 21  
 PAPER & MONOFILAMENT



291 **MARTHA SAVAGE**  
 ③ ALTERNATIVE SPACE | OCT. 20 + 21  
 METAL & NON-METALLIC MATTER  
 MIXED MEDIA COLLAGE  
 I cut up and rearrange, sew and glue paper from magazines, books, die-cuts, and other material. The recombinations represent my ironic point of view. Pictorial elements blend in unnatural ways and are visually engaging. The small books are made to be handled and appreciated for their textural and mechanical qualities. Equally odd are the handmade greeting cards.



174 **MARK SAVOIA**  
 PHOTOGRAPHY  
 ② ERECTOR SQUARE | OCT. 13 + 14  
 I have a tongue-in-cheek view of Americana and I am constantly looking for evidence that below the surface something is not quite right in this country. It is what visually perplexes me that draws my eye, and then becomes a compelling photograph. Through the camera's selective view, I juxtapose what is considered progress in our throwaway society against an increasing lack of taste. I am not attempting two-dimensional slapstick, but rather satire laced with a few Freudian slips.  
[www.laughingcamera.com](http://www.laughingcamera.com)



270 **MARCUS SCHAEFER**  
 ③ ALTERNATIVE SPACE | OCT. 20 + 21  
 METAL & NON-METALLIC MATTER  
 I define my art as Pre dystopian. Art that evokes a future that never was and art that acknowledges the human tendency towards nostalgia for past days that were not so good when they were happening. Consequently every generation tends to have those that think their world is on the brink of collapsing into a dystopia even though mankind has ever managed to stagger forwards despite the occasional backslide.  
[www.aberrant-tech.deviantart.com](http://www.aberrant-tech.deviantart.com)



68

**MORGAN SCHWARTZ**

① PASSPORT | OCT. 6 ONLY  
276 FRONT ST., NEW HAVEN  
GLASS

175

**DANA SCINTO**

② ERECTOR SQUARE | OCT. 13 + 14  
WOOD

My work evokes unexpected changes in my identity. Within my mind a possibility emerges; a nascent longing for anarchy in my well-controlled life. Due to the vast possibilities of accident, or fortune, I am able to find expression without control. A lesson in my true powerlessness makes me an artist. Layers, mixtures, and colors become not a conscious choice, but surrender to intemperance.

[www.danascinto.com](http://www.danascinto.com)



176

**JOHN SCULLY**

② ERECTOR SQUARE | OCT. 13 + 14  
PRINTMAKING

191

**VALERIE SELDON**

② ERECTOR SQUARE | OCT. 13 + 14  
PHOTOGRAPHY

Val Seldon manages programs for folks with disabilities during the day and carries her camera with her at all times, for that just-in-case moment. For Val "seeing things," especially things with color, has always been important to her. Photography seems to be her best mode of expression. Take a moment to enjoy her images.

177

**LISA SHOGLOW**

② ERECTOR SQUARE | OCT. 13 + 14  
ENCAUSTIC

My paintings, whether encaustic, watercolor, acrylic, digital, or photographic, are attempts to embody ongoing interior dialogues reflecting psychological states of mind and experience. Translucent, layered, obscured, embedded, scarred, they explore personal themes: Identity/Disappearance, Control/Submergence, Angst/Joy, and shadows of family history that linger as present forces.

105

**SIDEWAYS & ASKEW,  
A COLLABORATION**

② ERECTOR SQUARE | OCT. 13 + 14  
PAPER

From the collaboration between Liz Pagano, a New Haven print and mixed-media artist, and Hayne Bayless, a potter in Ivoryton, Sideways & Askew was created where paper and clay collide to produce artful illumination. Hayne does the metalwork for the lampshade frames, creates the base and then electrifies it. Liz then does her thing creating the material for the shades and puts them together.



271

**KYLE SKAR**

③ ALTERNATIVE SPACE | OCT. 20 + 21  
INSTALLATION

206

**MELISSA SLATTERY**

③ ALTERNATIVE SPACE | OCT. 20 + 21  
PAPER

195

**KATHLEEN SMITS**

② ERECTOR SQUARE | OCT. 13 + 14  
OIL ON CANVAS

I create what makes me feel good—whether it is peaceful, colorful, or curious. My paintings focus on changing skies and the colors created in the clouds and the landscape. My inspiration comes from the endless skies I have seen—no two alike and a million colors to see, reflected in shapes of moisture, water, and land. My photography led me into digital media and computer applications. It's a different process.

[www.kcsmitsgallery.com](http://www.kcsmitsgallery.com)

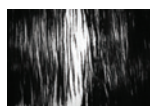


41

**ANITA SOOS**

① PASSPORT | OCT. 6 + 7  
WEST COVE STUDIOS  
30 ELM ST., WEST HAVEN  
OIL

The movements of life are reflected in water all around me. Oceans, pools, streams, lakes, rivers. I am continually struck by the notion that the chaos in nature is perfectly ordered. The quality of light, the movement of the water, the time of day, low tide, high tide, wind, calm, sun, rain, clouds, storm. These all converge into a single moment that is singular, never to be repeated.

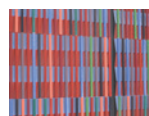


272

**CHRISTINA SPIESEL**

③ ALTERNATIVE SPACE | OCT. 20 + 21  
PAINT

I am a painter. When my time is too fractured, I make photographs which have to do with painting. I teach with video and make it. This portfolio consists in still digital photography (very current) and video stills (from videos that have soundtracks). When I do commissioned work, I think of it as site-specific work made under specific circumstances of place and client's desire interacting with my artistic eye and disposition.



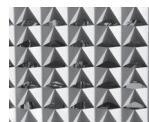
273

**MARK ST. MARY**

③ ALTERNATIVE SPACE | OCT. 20 + 21  
PHOTOGRAPHY

"All that's visible springs from causes intimate to you."—Dogen. I strive to create a sense of presence, capturing a mood through the intersections of light, form, and color. While the representational works beget a narrative, the abstract pieces are more intensely emotionally evocative, allowing the viewer's fantasy to shape the experience. It has more to do with the value of light and shadow than with the actual subject.

[www.saintvisions.net](http://www.saintvisions.net)



178

**RANDALL STANTON**

② ERECTOR SQUARE | OCT. 13 + 14  
DRAWING

274

**JEFFREY STARKES**

③ ALTERNATIVE SPACE | OCT. 20 + 21  
OIL

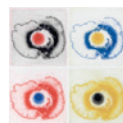
The elements of human culture and society form the basis of my abstract compositions. Bits and pieces from everyday life, or patterns that suggest the rhythms and structures of our social order, are combined with arbitrary or freeform backgrounds. My intention is to explore the dynamic tensions that are created when organization and control, of varied degrees, are superimposed on the amorphous natural world.

192

**THOMAS STAVOVY**

① PASSPORT | OCT. 6 + 7  
WEST COVE STUDIOS  
30 ELM ST., WEST HAVEN  
DRAWING

I use process to generate an image. My concerns are the relation of one form to another and to the edge of the image field.

**CURATOR-LED  
STUDIO VISITS**

JOIN US THURSDAY, OCTOBER 11 for an intimate, thought-provoking evening of art and conversation to benefit Artspace & City-Wide Open Studios. Begin your night with a seated dinner with wine hosted by Artspace Board Member Fred Giampietro at his gallery in Erector Square.

After dinner, join one of four art-world experts for studio visits of a hand-picked selection of Erector Square artists whose work has caught the curators' eyes. The evening will end on a high note with a lively discussion of the studio visits over dessert and coffee back at the Giampietro Gallery.

Tickets range from \$45-\$125. Visit [www.artspacenh.org](http://www.artspacenh.org) for information and to reserve your seat.

**CHOOSE YOUR GUIDE:**

1. Susan Cahan: Associate Dean for the Arts at Yale College
2. Cathleen Chaffee: Horace W. Goldsmith Assistant Curator of Modern and Contemporary Art at the Yale University Art Gallery.
3. Paul Ha: Director of the List Center for Visual Arts at the Massachusetts Institute of Technology.
4. Brooke Davis Anderson: Former Deputy Director of Curatorial Planning at the Los Angeles County Museum of Art (LACMA).

**EVENT COMMITTEE**

Cassandra Albinson • Eileen Eder • Fred Giampietro • Barbara Marks • Shannon Stewart

# WHAT IS ARTSPACE?

Artspace is a dynamic non-profit organization whose mission is to connect contemporary artists, audiences, and resources; to catalyze artistic activities; and to enrich art experiences and activate art spaces. Artspace has helped thousands of emerging artists develop their careers through exhibition, teaching, and commissioning opportunities. Our programs give visual artists unparalleled visibility, training and income, and are designed to foster appreciation for the vital role that artists play in improving the community.

We need your help! Please consider contributing to Artspace to help keep our gallery and programs running. Your gift is fully tax deductible and can be mailed to Artspace at 50 Orange Street, New Haven, CT 06510. You may also make donations online at [www.artspacenh.org/donate.asp](http://www.artspacenh.org/donate.asp).

Want to get involved in other ways? Know how to hang artwork, paint walls, drive a truck, answer phones, smile, talk enthusiastically, or shake hands? Want to help us persuade local businesses to be more supportive of exhibiting artists? Want to help us organize our archives and photographs? We would love for you to spend some time lending a hand at Artspace.

For more information about our volunteer projects and events contact [shannon@artspacenh.org](mailto:shannon@artspacenh.org).

185

## KATE STEPHEN

② ERECTOR SQUARE | OCT. 13 + 14  
③ ALTERNATIVE SPACE | OCT. 20 + 21  
JEWELRY

I feel free when I am creating jewelry. My motivation is to use the form of creation as meditation and as a means to interpret my creative inspiration in the form of beautiful adornments. My work looks for the harmony in chaos, the comfort in asymmetry, and the freedom within restriction. The macro and micro worlds of nature are always a driving force behind my work, especially the overwhelming power and wonder of the sea.

## 179 KEVIN STEVENS

② ERECTOR SQUARE | OCT. 13 + 14  
MIXED MEDIUM

I view art as the individual expression during the process of getting from a blank ground to a finished work of art. This being so, the finished product is really never the end result. It is only an experience to be applied to the next voyage, eliminating what did not work and carrying forward that which did. When I apply this philosophy to my painting, each painting hopefully becomes a springboard for the next. [www.artbykevinstevens.com](http://www.artbykevinstevens.com)



180

## RASHMI TALPADE

② ERECTOR SQUARE | OCT. 13 + 14  
DRAWING

As a photographer my work reflects my surroundings in minute detail. My photographs evolve into photo collages of dense, reconstructed landscapes which speak of history, humanity, and our place in it. The collages then metamorphose into drawings of everyday objects creating an optical play of visual depth. Geometric forms and clean sharp lines, juxtaposed on a background of multi-layered geometric paper shapes, merge abstraction with realism to build an environment that comments upon consumerism and replenishment.

[www.rashmi.NeoImages.net](http://www.rashmi.NeoImages.net)



275

## MICHAEL STOCK

③ ALTERNATIVE SPACE | OCT. 20 + 21  
PRINTMAKING

The blending of science and nature, together with my passion for bright primary colors, pop art, and mythical creatures, is a driving force behind my work. I believe in producing art that is affordable and accessible to everyone. My catalog ranges from basic and simplistic forms printed on a t-shirt, to more complex images that are worthy of galleries and museums. I strive to create pieces that have a timeless appeal, while still maintaining cultural relevancy.

[www.etsy.com/shop/stockboydesigns?ref=si\\_shop](http://www.etsy.com/shop/stockboydesigns?ref=si_shop)



181

## PAUL THERIAULT

② ERECTOR SQUARE | OCT. 13 + 14  
DIGITAL

My work engages in processes which are digitally based and of a tactile nature. I often combine these two divergent mediums through a process most adequately described as recycling, wherein an object is physically constructed, photographed, and digitized. Once digitized, the image is deconstructed and introduced as a digital palette from which I create a print. I allow for further confluence by utilizing printing techniques, which create a sense of texture within a two-dimensional space.

[www.paultheriault.biz](http://www.paultheriault.biz)

42

## KATHLEEN THOMA

① PASSPORT | OCT. 6 + 7  
WEST COVE STUDIOS  
30 ELM ST., WEST HAVEN  
PRINTMAKING-MONOTYPE

My work uses abstract patterns, shapes, and color to tell a non-verbal story. I use brilliant color contrasted with somber or dark tones to create space and movement. I have a story line in my head as I create, which starts with my choice of colors in most cases. Mood is very much a part of my work, as it is often my emotional state which determines the color choices.

[www.KathleenThoma.com](http://www.KathleenThoma.com)



194

## REGINA THOMAS

② ERECTOR SQUARE | OCT. 13 + 14  
WEST COVE STUDIOS  
30 ELM ST., WEST HAVEN  
PAINTING



20

## SARA THOMAS

① PASSPORT | OCT. 6 + 7  
ELI WHITNEY MUSEUM BARN  
920 WHITNEY AVE., HAMDEN  
PRINTMAKING

**HELP US SUPPORT  
THE ARTISTS  
WHO PARTICIPATE  
IN CWOS.**

Consider a work from the  
Main Exhibition for your  
holiday or birthday  
present needs.

182

**ROBERT THOMAS**② ERECTOR SQUARE | OCT. 13 + 14  
PHOTOGRAPHY

I enjoy the camera's ability to accurately capture the moment and reflect the vision of what I see. I have learned not just to document but to apply the creative aspects of composition and the freedom offered with digital image processing. My themes are inspired by the landscapes, be they urban or rural, and the imagery captured in reflective surfaces, weathered and worn structures, as well as the beauty and fragility found in nature.

[www.artistsimaging.com](http://www.artistsimaging.com)



276

**DAVID K THOMPSON**③ ALTERNATIVE SPACE | OCT. 20 + 21  
MIXED-TECHNIQUE ON PAPER

My art analyzes cartography, landscape, machinery, propaganda, documents, and other forms of aestheticized nationalism; it attempts to delineate psychological geographies and to redefine 'reality' in its absurdity. By the juxtaposition and deliberate misuse of geography, scientific aesthetics, and political semiotics with found-object readymades, my work questions classification, the existential nature of identity, and even the notion of art itself.

[www.studiodavidk.com](http://www.studiodavidk.com)



292

**GRACE TURMAN**③ ALTERNATIVE SPACE | OCT. 20 + 21  
DIGITAL

I work in a variety of media, including; paint, collage, photography, and print making, to name a few. I cover a range of concepts and subjects, but I always work with and around the human form, specifically with juxtaposition against hard line and geometry. I like to contrast the soft and malleable with the cold and immutable. My style is best characterized as figurative and illustrative. I typically make use of the written word.



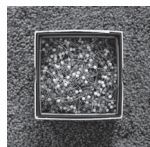
266

**UNIVERSITY OF NEW HAVEN  
SETON GALLERY**③ ALTERNATIVE SPACE | OCT. 20 + 21  
VARIOUS MEDIA

229

**RITA VALLEY**③ ALTERNATIVE SPACE | OCT. 20 + 21  
LIFE

64

**KEVIN VAN AELST**① PASSPORT | OCT. 6 + 7  
111 DESSA DRIVE, HAMDEN  
PHOTOGRAPHY

72

**KIM VAN AELST**① PASSPORT | OCT. 6 + 7  
111 DESSA DRIVE, HAMDEN  
PAINTING

183

**CATHERINE VANARIA**② ERECTOR SQUARE | OCT. 13 + 14  
PHOTOGRAPHY

I am exploring the working methods of early portrait photographers whose equipment was not of today's standards. I am working in a small studio with limited available light, which forces my subjects to hold still, and due to the length of the exposure, not smile. I make the eyes the most important point in each frame letting other sections fall out of focus. I believe that the eyes are our truth-meters.

[www.cavanaria.com](http://www.cavanaria.com)



58

**RACHEL VATERS CARR**① PASSPORT | OCT. 6 + 7  
15 GILBERT ST., WEST HAVEN  
SCULPTURE /WALL-RELIEF  
[www.vaters-carr.com](http://www.vaters-carr.com)

277

**FREDERICK VELARDI**③ ALTERNATIVE SPACE | OCT. 20 + 21  
ACRYLIC

207

**MARGA VELDHIJZEN**③ ALTERNATIVE SPACE | OCT. 20 + 21  
CLAY (SCULPTURE)

60

**THUAN VU**① PASSPORT | OCT. 6 + 7  
HIGHWOOD SQUARE  
943 DIXWELL AVE., HAMDEN  
OIL PAINT  
[www.landscapes.thuanvu.com](http://www.landscapes.thuanvu.com)

278

**MARAH JUNE WALLACH**③ ALTERNATIVE SPACE | OCT. 20 + 21  
PHOTOGRAPHY

279

**TRACY WALTER FERRY**③ ALTERNATIVE SPACE | OCT. 20 + 21  
SCULPTURE

Genetically modified organisms can be made from plants, animals, or even microorganisms. I explore what would happen if the order within these organisms was disrupted. In creating these newly found objects, I combine materials that are not typically put together. I create new beings, then deconstruct them and use the parts for new sculptures. It is work similar to that of a scientist in a lab.

[www.tracywalterferry.com](http://www.tracywalterferry.com)



280

**BRIAN WALTERS**③ ALTERNATIVE SPACE | OCT. 20 + 21  
STEEL SCULPTURE

My work is comprised of salvaged material sourced locally. There is something unique and personal to each individual piece of metal used in my work. I highlight the rust, peeling paint, gouges, and other defects in the material that have been acquired by years of service to society. My aim as a sculptor is to showcase not only the material being used but the story behind it.

[www.behnkedoherty.com](http://www.behnkedoherty.com)

24

**GAR WATERMAN**① PASSPORT | OCT. 6 + 7  
425 WEST ROCK AVE., NEW HAVEN  
SCULPTURE

A combination of observation of natural phenomena, sensual devotion to the tactile possibilities of material, and a model maker's tinkering sensibility of fabricating from bits inform my work. During a formative year in Tahiti from the age of 9 to 10, my daily contact was with the lush reefs of the South Pacific, with their hydrodynamic fish, rays, sharks, and corals, and with the exotic flora of the Polynesian landscape.

[www.garwaterman.com](http://www.garwaterman.com)



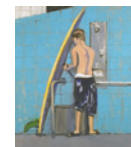
43

**JONATHAN WATERS**① PASSPORT | OCT. 6 + 7  
SCULPTURE  
[www.jonathanwatersart.com](http://www.jonathanwatersart.com)

10

**JONATHAN WEINBERG**① PASSPORT | OCT. 6 + 7  
251 GREENE ST., NEW HAVEN  
ACRYLIC

A friend of mine asked, "Why don't you paint naked women?" I replied, "Would you ask Matisse why he doesn't paint naked men?" I paint naked men because I am attracted to them. I purposely pose men in positions that are traditionally reserved for women. To the degree that men are painted nude in the history of art they are usually shown standing and active—not in repose, and not vulnerable the way they are in my paintings.



69 **BRIAN WENDLER**

① PASSPORT | OCT. 6 + 7  
26 CLIFTON ST., NEW HAVEN  
PAINT

I believe a life in art is one of continual learning and I am always occupied with the study of it. When I approach my subject I try to empty my mind and respond to prompts from the subject, the painting, and from within, always with an eye to simplifying shapes while distilling colors and impressions. I view this work as evidence of an interior dialog.  
[www.briangillwendler.com](http://www.briangillwendler.com)

196.5 **BEN WESTBROCK**

② ERECTOR SQUARE | OCT. 13 + 14  
CERAMICS

190 **KAREN WHEELER**

② ERECTOR SQUARE | OCT. 13 + 14  
MIXED MEDIA

My mixed media assemblages merge traditional materials and methods with digital techniques. I enjoy the ancient art of papermaking equally with using the latest version of Photoshop. Both handmade papers and digital collages are combined with my drawings, richly textured painted surfaces, and found objects to create my work. My objective for the viewer has always been to provide a sense of visual joy.  
[www.karenart.com](http://www.karenart.com)

281 **ELIZABETH WHITE**

③ ALTERNATIVE SPACE | OCT. 20 + 21  
SCULPTURE

282 **CHRISTA WHITTEN**

③ ALTERNATIVE SPACE | OCT. 20 + 21  
GOUACHE

208 **JIM WHITTEN**

③ ALTERNATIVE SPACE | OCT. 20 + 21  
POETRY

30 **JOANNE WILCOX**

① PASSPORT | OCT. 6 + 7  
WESTVILLE VILLAGE, NEW HAVEN  
CELL PHONE PHOTOS ON CARD CATALOG CARDS  
*The Call to Everyone* is an exhibition of over 600 discarded library catalog cards that have been repurposed as canvases for cell phone photos. Participants from all over Connecticut, along with more than 20 cities around the U.S. and 12 countries, have printed their photos on discarded catalog cards and due date cards from local libraries.  
[www.thecalltoeveryone.com](http://www.thecalltoeveryone.com)

283 **GLENN WILLIAMS**

③ ALTERNATIVE SPACE | OCT. 20 + 21  
ACRYLIC PAINT

My goal is to make good art as I define it. Good art should speak to the viewer. It should sing and move you. Good art is timeless.  
[www.livepaint.org](http://www.livepaint.org)

284 **LINDA WINGERTER**

③ ALTERNATIVE SPACE | OCT. 20 + 21  
FOUND

28 **MARJORIE WOLFE**

① PASSPORT | OCT. 6 + 7  
WESTVILLE VILLAGE, NEW HAVEN  
PHOTOGRAPHY

285 **JEFF WRENCH**

③ ALTERNATIVE SPACE | OCT. 20 + 21  
ACRYLIC PAINTING

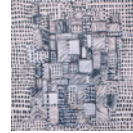
I am looking for serendipity—the happy accidents that come from unexpected but compelling juxtapositions of color, shape, and texture. To encourage this, I often use found materials such as wallpaper and work from instinct with heavy brush strokes and intuitive color choices. If I am successful, I hope the viewer might reconsider themselves, those around them, or their surroundings—and look again at mundane aspects of their world with fresh eyes.  
[www.noiscian.com](http://www.noiscian.com)

186 **DON WUNDERLEE**

② ERECTOR SQUARE | OCT. 13 + 14  
PAINTING

While making a painting I try to keep myself open to intuition and trust. Painting is an inventive process. Any time I start with a fully realized idea I invariably run into a wall and the whole process breaks down, and I guess that is what it is about. The search to fill that void with a visual construct that represents order in the time/space/memory continuum.

[www.wunderleearts.com](http://www.wunderleearts.com)

187 **DAN YAGMIN JR**

② ERECTOR SQUARE | OCT. 13 + 14  
WATERCOLOR

258 **YALE UNIVERSITY, OFFICE OF THE PRINTER**

③ ALTERNATIVE SPACE | OCT. 20 + 21  
PRINT

188 **GERALD YORK**

② ERECTOR SQUARE | OCT. 13 + 14  
OIL PAINT

I am a figurative representational artist and I focus on creating portrait drawings, paintings, and sculptures for private individuals and institutions. I serve a very wide range of clients and welcome inquiries regarding commissioning a portrait drawing, painting, or sculpture.  
[www.geraldpyork.com](http://www.geraldpyork.com)

59 **KRISTINA ZALLINGER**

① PASSPORT | OCT. 6 + 7  
943 DIXWELL AVE., UNIT N, HAMDEN  
ACRYLIC  
[www.kristinazallinger.com](http://www.kristinazallinger.com)

189 **ROBERT ZOTT**

② ERECTOR SQUARE | OCT. 13 + 14  
SOUND

My recent work combines elements of traditional Delta blues (guitar and vocals) with elements of performance art. Each of the original songs incorporates mechanical or electronic devices that alter the voice, emit sounds, or provide opportunities for visual interaction. Devices such as a nautical speaking tube, Morse code generator, and a music box made from a flight recorder from a 737 aircraft make reference to communication at a distance and function as metaphors for isolation.  
[www.robertzott.com](http://www.robertzott.com)





We are most grateful to all of the organizations, businesses, and individuals who have helped make this year's City-Wide Open Studios possible.

#### ALTERNATIVE SPACE HOST

The New Haven Register

#### MEDIA SPONSORS

The New Haven Register

#### RADIO SPONSOR

WPKN

#### SPONSORS

City of New Haven Office of Economic Development

Connecticut Commission on Culture & Tourism

First Niagara Bank Foundation

Greater New Haven Community Foundation

National Endowment for the Arts

Yale University

#### NEW HAVEN REGISTER TEAM

Matt DiRienzo

Mary Kate Bzdrya

Rick Bolognese

Gregory Ferine

Lynda Mettler

Colin Thompson

Al and his trucks

Tom Wiley, Digital First

Joe Miller, Digital First

#### BIKE TOURS

The Devil's Gear Bike Shop

Matt Feiner & Dave Kahn

Rosemary Lennox

#### MARKETING, PROMOTION, & OUTREACH

Bruno Baggetta & Market New Haven

Margaret Bodell

Bill Brown, Eli Whitney Museum

Lauren Levy

Ed Stannard, Angela Carter, and the staff of the New Haven Register

Chris Ortwein, On9

Yale School of Management Team:

Justine Chan, Matt Losch, & Lily Roh

Shannon Connors

#### S/N/L SPEED/NETWORKING/LIVE!

Kenise Barnes, Owner, Kenise Barnes Fine Art, LLC

Daniel Belasco, Freelance Curator, New York

Marianne Bernstein, Independent Curator, Philadelphia

Sharon Butler, Blogger/Critic, Two Coats of Paint

Elinor Buxton, Independent Curator

Elizabeth DeRose, Frmr. Assistant Curator, Yale University Art Gallery & PhD Candidate at the Graduate Center CUNY

Pamela Franks, Deputy Director for Collections & Education, Yale University Art Gallery

Fred Giampietro, Owner, Giampietro Gallery, New Haven

Hope Ginsburg, Artist and Assistant Professor in the Department of Painting & Printmaking, Virginia Commonwealth University

Steve Holmes, Curator, Bass Museum, Miami and Cartin Collection, Hartford

Richard Klein, Curator, Aldrich Contemporary Art Museum

Petrushka Bazin Larsen, Curator and Program Manager, The Laundromat Project, Brooklyn

Keyjo Lee, PhD Candidate, Art History/ African American Studies, Yale University

Omar Lopez-Chahoud, Independent Curator, New York

Frank Mitchell, Adjunct Curator, Amistad Center for Arts & Culture

Sarah Murkett, Founder and Owner, Murk & Co., New York

John O'Donnell, Adjunct Professor, Southern Connecticut State University

Cynthia Reeves, Owner, Cynthia Reeves Gallery, New York

Anna Rogulina, Assistant Curator, New Britain Museum of American Art

Terri Smith, Director, Franklin Street Works

Lexi Lee Sullivan, Assistant Curator, DeCordova

Christina Vassalo, Executive Director, FluxFactory, New York

Liena Vayzman, Curator, Crystal Palace Film/Video Festival, New Haven

#### THANKS TO THE FOLLOWING PEOPLE WHO MADE S/N/L A GREAT SUCCESS

Sinclair Marber

Lisa Molomot/Videography

Katie Stone

Nadia Westenberg

#### THE PLAYHOUSE COULD NOT HAVE HAPPENED WITHOUT THE HELP OF

Susan Smith, Barbara Harder, Kate Paranteau, & Creative Arts Workshop

Joe Banks & Bruce Wujcik of Svigals & Partners

Baley Boccitto

John Bradley

Branford College Master's Office

Chairigami & Zach Rothholz

Tom Duffy

Liberty Community Services staff & clients

Robert Orr

Paul Theriault & Michael Galvin

Yale Day of Service students

Win Davis

Master Printer Cindy Ettinger

Marianne Bernstein

#### IN KIND AND OTHER SPECIAL THANKS

Marion Cherrone, Slocum & Sons

EC Schroeder, Doreen Powers, & the staff of the Beinecke Library

Rachel Bernsen

Margaret Bodell, Kelly Murphy, & Vivian Nabeta

Kathy Telman, Erector Square

Roy Smith, West Cove Studios

Shannon Stewart

Jeff Carter, WestMount

Maegan McElderry

New Haven Mineral Club

Kyle Skar & Dave Coon

Liang Guo

Joe's Paint (for the parachute fabric)

Chris Schweitzer, Connie Razza, Bradley Daniels, Laura Noe, & ArtSpace's regular weekday volunteers

#### CWOS 15 GUEST CURATORS

Marianne Bernstein

Terri C. Smith

Liena Vayzman

#### ESSAYIST

Hank Hoffman

#### IDENTITY & DESIGN

Leslie Kuo

with:

Ming Bai, Intern

George Corsillo/Design Monsters (Limited Edition Print)

Dexterity Press (Passport)

Megan Mangun (Erector Square Preview Tour Invitation)

Star Hill Studio (Official CWOS Guide)

#### BOOKKEEPING

Colin Burke

Carter Hayes

Lisa Magson

#### MAIN EXHIBITION CREW

JP Culligan

Andrew Francis

Martha Lewis

Noe Jimenez

Chris Schweitzer

Shelly Stevens

#### ADDITIONAL PHOTO CREDITS

Leslie Kuo

Mia Orsatti

#### ARTSPACE INTERNS

Moses Balian

Joy Daniels

Bryant Davis

Erin Desmond

Caleb Hendrickson

Sinclair Devereux Marber

Minh Nguyen

Lucy Topoloff

Jeremy Wolin

Nadia Westenberg

#### ARTSPACE BOARD OF DIRECTORS

Barbara Pearce, Chair

Bill Kalinowski, Treasurer

Cassandra Albinson, Secretary

Jeff Carter

Kathleen DeMeo

Eileen Eder

Fred Giampietro

Betsy Henley-Cohn

David Leffell

Nick Lloyd

Barbara Marks

Bruce McDermott

Tahlia Townsend

Caroline Wharton

Amy Wrzesniewski

#### ARTSPACE VISUAL ARTS COMMITTEE

Johanna Bresnick, Chair

Kwadwoe Adae

Geoff Detrani

Debbie Hesse

Todd Jokl

Willard Lustenader

Meredith Miller

Michael McElderry

Kerri Sancomb

Jean Scott

Rashmi Talpade

Paul Theriault

Erika Van Natta

#### ARTSPACE STAFF

Helen Kauder, Executive Director

Michael Galvin, Visual Arts Coordinator & Gallery Manager

Martha Lewis, Curator of Education

Shannon Connors, Communications & Community Outreach Coordinator

JP Culligan, City-Wide Open Studios Coordinator



## Let the digital pros at Milford Photo scan your memories and create a new album or DVD.

*(While you're here, don't miss our great selection of cameras, accessories, imaging, classes and framing!)*



*New!*  
Canon T4i

Weddings on VHS tapes? High school graduations? Proms? Reunions? Births? Anniversaries? Baby's first step?

We all have special **irreplaceable memories** – usually stuffed in a box in the attic, or on a shelf in the basement. Bring your old **videos, slides or photos** into **Milford Photo** and we'll finally do what you've been putting off for years.

Our **digital technology** scans your memories to create an archive you can keep forever, formatted to your needs.

**Preserving old photos**, slides and videos is one of our most popular services. **You'll be amazed at the quality and results.**

*Bring your old photos, slides and videos into Milford Photo today!*



Our *focus* is you.

22 River Street  
Milford, CT 06460  
**203-882-3415**  
MilfordPhoto.com